



North American Commercial and Residential

PRODUCT LINE OVERVIEW

1PH + 3PH | 50/60HZ

Advancing Ventilation®

RESIDENTIAL AND LIGHT COMMERCIAL

MODEL TD



Sizes 100 to 400
100 to 2,628 CFM
120V 60Hz
HVI Certified

AMCA Seal for Air
cULus Listed
ENERGY STAR® Qualified

In-Stock Availability

MODEL TD- SILENT



Sizes 125X to 200
100 to 530 CFM
120V 60Hz
cULus Listed

HVI Certified
ENERGY STAR® Qualified

In-Stock Availability

MODEL PV



Sizes 100 to 315
100 to 3,124 CFM
120V 50Hz |
120V 60Hz

cULus Listed
AMCA Seal for Air

In-Stock Availability

HVI Certified

MODEL PV-DEDPV



Size 4"
30-150 CFM
120V 60Hz

HVI Listed
AMCA Seal for Air

In-Stock Availability

cULus Listed 705 safety listed Dryer Exhaust Duct Power Ventilator for use with Gas or Electric clothes dryers

MODEL SWF



Sizes 100 to 200
100 to 400 CFM
120V 60Hz
cULus Listed

HVI Certified

In-Stock Availability

MODEL PRF



Sizes 100 to 150
169 to 321 CFM
120V 60Hz
cETLus Listed

AC Motor
HVI Certified

In-Stock Availability

MODEL PCV



Sizes 50 to 80
50 to 80 CFM
120V 60Hz
AC Motor
cETLus Listed

ENERGY STAR® Qualified (80 only)
HVI Certified

In-Stock Availability

MODEL PCXP



Sizes 80 to 150
80 to 150 CFM
cETLus Listed
AC Motor
HVI Certified

AMCA Seal for Air & Sound
ENERGY STAR® Qualified

In-Stock Availability

MODEL PCLP



Sizes 80 to 100
80 to 100 CFM
120V 60Hz
AC Motor
cETLus Listed

ENERGY STAR® Qualified
HVI Certified

In-Stock Availability

MODEL PCRL



Size 80
80 CFM
120V 60Hz
HVI Certified

cETLus Listed
ENERGY STAR® Qualified
AC Motor

In-Stock Availability

MODEL reFresh



Sizes 8 and 10
AC and EC Motors
20 to 170 CFM
120V 60Hz
AMCA Seal for Air & Sound

HVI Certified
ENERGY STAR® Qualified
cULus 507 & 2043 Listed

Ecovatt®

MODEL PCD



Sizes 110-200
40 to 200 CFM
120V 60Hz
DC Motor

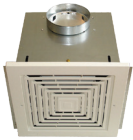
ENERGY STAR® Qualified
HVI Certified
AMCA Seal for Air & Sound (PCD200)
cETLus Listed

Humidity, motion, and VOC sensing models

In-Stock Availability

Ecovatt®

MODEL AF/FF/FFC



Sizes 50 to 3500
50 to 2000 CFM
120V 60Hz
ENERGY STAR® Qualified

AMCA Seal for Air & Sound
cULus Listed
In-Stock Availability

MODEL MD and MDX-ES24VK kits



4" to 14" diameter
Kits include MD + ES24V control
Kits available in sizes 4" to 8"

ENERGY RECOVERY VENTILATORS

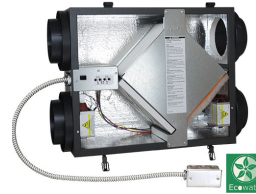
MODEL TR



Sizes 90 to 300
40 to 310 CFM
120V 60Hz
AC Motor
cULus Listed

HVI Certified
TRC 800- Vertical and Horizontal configurations available

MODEL TRLPe



Size 100
40 to 310 CFM
120V 60Hz
cETLus Listed

HVI Certified
Ecowatt®

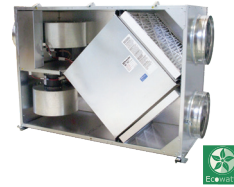
MODEL TRC & TRCV



Sizes 50 to 1600
200 to 2,200 CFM
120V 60Hz
208-230V 60Hz
460V 60Hz

AC Motor
cETLus/cULus Listed
AHRI Certified
TRC800- Vertical + Horizontal configuration

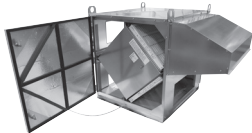
MODEL TRCe



Sizes 500 to 1200
200 to 2,200 CFM
120V 60Hz
208-230V 60Hz
cETLus Listed
AHRI Certified

EC Motor
TRCe800 - Vertical and Horizontal Configurations
Ecowatt®

MODEL CRT



3 Models with 2, 3 or 4 cores
500 to 4,000 CFM
120V 60Hz | 208-230V 60Hz
AHRI Certified Core

CENTRIFUGAL ROOF AND SIDEWALL FANS

MODEL LPD



Sizes 6 to 8
50 to 420 CFM
AMCA Seal for Air & Sound
115/230 60Hz | 230V 50Hz

cULus Listed
Sidewall mount available
In-Stock Availability

MODEL CWD



Sizes 7 to 16
66 to 3,360 CFM
115/208-230 60Hz
208-230 50Hz

AMCA Seal for Air & Sound
cULus Listed
In-Stock Availability

DIRECT DRIVE MODELS

MODEL SDBD



Sizes 6 to 16
53 to 3,298 CFM
115/230-230 60Hz
208-230 50Hz
AMCA Seal for Air & Sound

cULus Listed
Sidewall mount available
Miami-Dade NOA and Florida Product Approval Option Available
In-Stock Availability

MODEL SDBDe



Sizes 7 to 16
53 to 4,984 CFM
115/208-230 60Hz
208-230 50Hz
EC Motor
AMCA Seal for Air & Sound

cULus Listed
Miami-Dade NOA and Florida Product Approval Option Available
Ecowatt®



What is ECOWATT? S&P has developed the Ecowatt® standard to classify energy-efficient products that use Electronically Commutated (EC) or Direct Current (DC) motors. Models that fall under this standard have a certified performance through AMCA (Air Movement & Control Association International, Inc.) or HVI (Home Ventilating Institute). If the products designed for residential applications the model must be ENERGY STAR® qualified.

MODEL STXD/STXD-RHUL



Sizes 6 to 16
55 to 4,781 CFM

115/208-230 60Hz
208-230 50Hz

Sidewall mount available

AMCA Seal for Air & Sound

cULus 705 or 762 Listed

Miami-Dade NOA and Florida Product Approval Option Available

MODEL STXDe/STXDe-RHUL



Sizes 6 to 16
53 to 3,187 CFM

115/208-230 60Hz
208-230 50Hz

EC Motor

Miami-Dade NOA and Florida Product Approval Option Available

AMCA Seal for Air & Sound

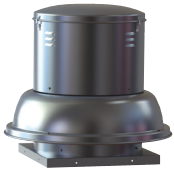
cULus 705 or 762 Listed

Sidewall mount available

Ecowatt®

BELT DRIVE MODELS

MODEL SDB



Sizes 6 to 48
201 to 37,920 CFM

115/208-230 60Hz
208-230/460 60Hz
380 60Hz | 575 60Hz
220-230 50Hz
380/415 50Hz

AMCA Seal for Air & Sound

cULus Listed

Miami-Dade NOA and Florida Product Approval Option Available

In-Stock Availability

MODEL STXB/STXB-RHUL/ STXB-HT2/STXB-HT



Sizes 8 to 48
201 to 36,744 CFM

115/208-230 60Hz
208-230/460 60Hz
380 60Hz | 575 60Hz
220-230 50Hz
380/415 50Hz

AMCA Seal for Air & Sound

cULus Listed 705 or 793 Listed

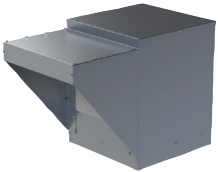
Miami-Dade NOA and Florida Product Approval Option Available

In-Stock Availability

ROOF SUPPLY FANS

BELT DRIVE MODELS

MODEL KSFV



Sizes 9 to 20
466 to 12,600 CFM

115/208-230 60Hz
208-230/460 60Hz
380 60Hz | 575 60Hz
220-230 50Hz
380/415 50Hz

AMCA Seal for Air & Sound

cULus Listed

Intake extension available

In-Stock Availability

MODELS CSF & LSF



Sizes 9 to 20
440 to 12,520 CFM

115/208-230 60Hz
208-230/460 60Hz
380 60Hz | 575 60Hz
220-230 50Hz
380/415 50Hz

AMCA Seal for Air & Sound

cULus Listed

Hooded or Louvered housings

Note: Motor Availability varies by horsepower and size.
Please check Optisizer.com for availability.

CENTRIFUGAL INLINE FANS

BELT DRIVE MODELS

MODEL SQB



Sizes 7 to 42
98 to 24,544 CFM

115/208-230 60Hz
208-230/460 60Hz
380 60Hz | 575 60Hz
220-230 50Hz
380/415 50Hz

AMCA Seal for Air & Sound

cULus Listed

In-Stock Availability

MODEL CTB/CTB-RHUL



Sizes 9 to 42
300 to 20,000 CFM

115/208-230 60Hz
208-230/460 60Hz
380 60Hz | 575 60Hz
220-230 50Hz
380/415 50Hz

AMCA Seal for Air & Sound

cULus 705 or 762 Listed

MODEL CFD



Sizes 7 to 15
200 to 5,800 CFM

115/208-230 60Hz
208-230/460 60Hz
380 60Hz | 575 60Hz
220-230 50Hz
380/415 50Hz

AMCA Seal for Air & Sound

cULus Listed

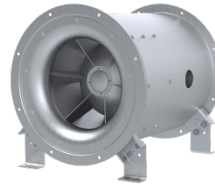
DIRECT DRIVE MODELS

MODEL SQD/eSQD



Sizes 6 to 15	UL Listed
AC & EC motors	Ecovatt®
93 to 2,879 CFM	
115/208-230 60Hz	In-Stock Availability (SQD only)
208-230 50Hz	
AMCA Seal for Air & Sound	

MODEL SMXD



Sizes 15 to 24	AMCA Seal for Air & Sound
AC motors	
1,300 to 17,000 CFM	cULus Listed
208-230/460 60Hz	
575 60Hz	

PROPELLER SIDEWALL FANS

DIRECT DRIVE MODELS

MODEL GED/GSD/eGED/eGSD



LOW PRESSURE	
Sizes 10 to 20	AMCA Seal for Air & Sound
AC & EC Motors	
200 to 3,500 CFM	cULus Listed
115/208-230 60Hz	In-Stock Availability (GED/GSD only)
208-230 50Hz	
	Ecovatt®

MODEL DFE/DFS



MEDIUM PRESSURE	
Sizes 10 to 30	115/208-230 60Hz
37 to 12,415 CFM	208-230 50Hz

MODEL DDE/DDS



HIGH PRESSURE	
Sizes 24 to 60	
3,500 to 55,800 CFM	
115/208-230 60Hz	
208-230 50Hz	

MODEL ACF



Sizes 48
20,300 CFM

BELT DRIVE MODELS

MODEL LCE/LCS



LOW PRESSURE	
Sizes 20 to 60	AMCA Seal for Air & Sound
2,829 to 40,855 CFM	
115/208-230 60Hz	cULus Listed
208-230/460 60Hz	In-Stock Availability
380 60Hz 575 60Hz	
220-230 50Hz	
380/415 50Hz	

MODEL L2E/L2S



MEDIUM PRESSURE	
Sizes 24 to 60	AMCA Seal for Air & Sound
5,000 to 47,000 CFM	
115/208-230 60Hz	cULus Listed
208-230/460 60Hz	
380 60Hz 575 60Hz	
220-230 50Hz	
380/415 50Hz	

MODEL L3E/L3S



HIGH PRESSURE	
Sizes 42 to 72	AMCA Seal for Air & Sound
21,683 to 85,089 CFM	
115/208-230 60Hz	cULus Listed
208-230/460 60Hz	
380 60Hz 575 60Hz	
220-230 50Hz	
380/415 50Hz	

INLINE TUBEAXIAL FANS

MODEL TDD

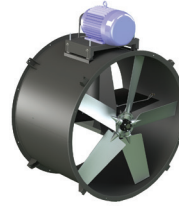


DIRECT DRIVE MODEL

Sizes 12 to 48
 855 to 40,194 CFM
 115/208-230 60Hz
 208-230/460 60Hz
 380 60Hz | 575 60Hz

AMCA Seal for Air & Sound
 cULus Listed

MODEL TDB



BELT DRIVE MODEL

Sizes 12 to 60
 914 to 75,490 CFM
 115/208-230 60Hz
 208-230/460 60Hz
 380 60Hz | 575 60Hz
 220-230 50Hz
 380/415 50Hz

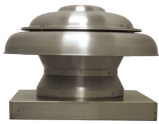
AMCA Seal for Air & Sound
 cULus Listed

Note: Motor Availability varies by horsepower and size.
 Please check Optisizer.com for availability.

PROPELLER ROOF VENTILATORS

DIRECT DRIVE MODELS

MODEL ARE/ARS



Sizes 10 to 20
 162 to 2,827 CFM
 115/208-230 60Hz
 208-230/460 50Hz

AMCA Seal for Air & Sound
 UL Listed
In-Stock Availability

MODEL HRED-C (Exhaust)



Sizes 24 to 60
 1,193 to 48,780 CFM
 115/208-230 60Hz
 208-230/460 60Hz

AMCA Seal for Air
 Reversible models available

MODEL HRSD (Supply)



Sizes 24 to 54
 2,509 to 50,109 CFM
 115/208-230 60Hz
 208-230/460 60Hz

Reversible models available
 Filtered models available

MODEL UBX (Exhaust)



Sizes 24 to 72
 5,200 to 65,500 CFM
 115/208-230 60Hz
 208-230/460 60Hz

AMCA Seal for Air & Sound
 Reversible models available

BELT DRIVE MODELS

MODEL UBS/UBS-P (Exhaust)



Sizes 24 to 60
 3,730 to 51,000 CFM
 115/208-230 60Hz
 208-230/460 60Hz
 380 60Hz | 575 60Hz
 220-230 50Hz
 380/415 50Hz

cULus Listed
 UBS-P has a polypropylene propeller

MODEL HREB-C and HREB-P (Exhaust)



Sizes 24 to 60
 1,159 to 93,240 CFM
 115/208-230 60Hz
 208-230/460 60Hz
 380 60Hz | 575 60Hz
 220-230 50Hz
 380/415 50Hz

AMCA Seal for Air and Sound
 cULus Listed
 Reversible models available
 HREB-P has a polypropylene propeller

MODEL HRSB (Supply)



Sizes 24 to 60
 2,979 to 52,534 CFM
 115/208-230 60Hz
 208-230/460 60Hz
 380 60Hz | 575 60Hz
 220-230 50Hz
 380/415 50Hz

UL Listed
 Filtered models available
 Reversible models available

MODEL UBB (Exhaust)



Sizes 24 to 72
 4,800 to 70,800 CFM
 115/208-230 60Hz
 208-230/460 60Hz
 380 60Hz | 575 60Hz
 220-230 50Hz
 380/415 50Hz

cULus Listed
 AMCA Seal for Air & Sound

Note: Motor Availability varies by horsepower and size.
 Please check Optisizer.com for availability.

REMOTE DRIVE MODELS

MODEL UBSRD/UBSRD-P/UBSRD-HT/ UBSRD-HT1 (Exhaust)



Sizes 24 to 60
4,977 to 52,173 CFM
115/208-230 60Hz
208-230/460 60Hz
380 60Hz | 575 60Hz
220-230 50Hz
380/415 50Hz

cULus Listed
UL-793 High
Temperature for Heat
& Smoke Removal
(UBSRD-HT1 ONLY)

MODEL TUB/TUB-HT/TUB-P (Exhaust)

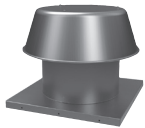


Sizes 24 to 60
4,321 to 60,116 CFM
115/208-230 60Hz
208-230/460 60Hz
380 60Hz | 575 60Hz
220-230 50Hz
380/415 50Hz

UL-793 Hi-Temperature
for Heat & Smoke
Removal (TUB-HT)
TUB-P has a
polypropylene propeller

GRAVITY VENTS INTAKE/RELIEF

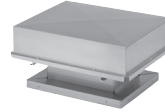
MODEL RCXII & RCXII-SF



Sizes 6 to 36
64 to 10,378 CFM
Static Pressure to .350"
Voltage N/A

Curb mounted or
Self-Flashing
In-Stock Availability

MODEL BGH/RLX



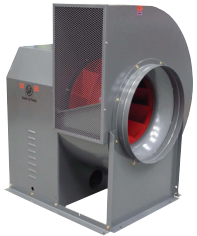
BGH Size 12 X 12 to 72
X 144
RLX Size 12X12 to
84X144;
3 tiers up to 20 tiers44

536 to 90,000 CFM
Voltage N/A
Static pressure to 1/4"

UTILITY EXHAUST/SUPPLY FAN

BELT DRIVE MODELS

MODEL CM/CM-RHUL/CM-HT



Sizes 10 to 36
499 to 23,958 CFM
115/208-230 60Hz
208-230/460 60Hz
380 60Hz | 575 60Hz
220-230 50Hz
380/415 50Hz

AMCA Type C Spark Resistant
Option Available
AMCA Seal for Air & Sound
cULus 705, 762, & 793 Listings
In-Stock Availability

Note: Motor Availability varies by horsepower and size.
Please check Optimizer.com for availability.

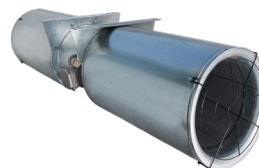
JET FAN SERIES

MODEL IFFT



Sizes 50N to 100N
1,754 to 5,238 CFM
cULus Listed

MODEL TJFU



Sizes 315 to 400
1,560 to 6,474 CFM
cULus Listed

MODEL IFAB



12N thrust
1,530 CFM
cULus Listed

QUICK SELECTION

Model	Mounting Location					Airflow		Application						Motor/Drives			Impeller Type			
	Roof Curb	Floor/Base	Hanging	Wall	Ceiling	Exhaust	Supply	General/Clean Air	Contaminated Air	Spark Resistant	Grease/Restaurant (UL762)	Smoke Control (UL)	High Temp above 200° F	Energy Recovery	Belt	Direct	Ecowatt (EC Motor Available)	Centrifugal	Propeller	Mixed Flow
Residential/Light Commercial																				
TD					X	X	X	X								X				X
TD-SILENT					X	X	X	X								X				X
PV					X	X	X	X								X		X		
reFresh					X		X	X								X		X		
SWF				X		X	X	X								X		X		
PC/PCLP/PCV/PCRL				X	X	X	X	X								X		X		
PCD					X	X	X	X								X		X		
FF/FFC			X		X	X	X	X								X		X		
PRF					X	X	X	X								X		X		
Recovery Ventilators (ERVs & HRVs)																				
TR		X			X	X	X	X	X				X			X		X		
TRC					X	X	X	X	X				X			X		X		
TRCe					X	X	X	X	X				X			X				
CRT					X	X	X	X	X				X							
Centrifugal Roof and Sidewall Fans																				
LPD	X					X	X	X	X	X						X		X		
SDBD/SDBDe	X			X		X	X	X	X	X						X		X		
SDB	X					X	X	X	X	X						X		X		
STXB	X			X		X	X	X	X	X						X		X		
STXB-RHUL	X					X	X	X	X	X			X			X		X		
STXB-HT2/STXB-HT	X					X	X	X	X	X			X			X		X		
STXD/STXDe	X				X	X	X	X	X	X						X		X		
STXD-RHUL/STXDe-RHUL	X					X	X	X	X	X			X			X		X		
CWD						X	X	X	X	X						X		X		
Centrifugal Filtered Supply																				
CSF/LSF	X						X	X										X		

*** Models TR, TRC(e) and CRT (ERVs) have a 10-year core warranty and a 5-year warranty on the balance of the TR unit and a 2-year warranty on the balance of the TRC(e) and CRT.**

Competitors Cross Reference Models

Models are for general similarity only. Refer to specifications and construction data for details

S&P	DESCRIPTION	ACME	CARNES	COOK	GREENHECK	PENN	TWIN CITY	COOLAIR	FANTECH	CAPTIVE AIRE
SDB	Power Roof Exhauster - Centrifugal - Belt Drive	PV/PNN	VEBK	ACEB	GB	DXB/KB/JB/MB	BCRD	CRBCA	3BDD	DD-FA
LPD	Power Roof Exhauster - Centrifugal - Direct Drive	PRN	VEDK	ACED	G	DX	CRDD	CRDA	5DDD	DR-HFA
SDBD	Power Roof Exhauster - Centrifugal - Direct Drive	PRN	VEDK	ACED	G	DX	CRDD	CRDA	5DDD	DR-HFA
STXB	Upblast Roof Exhauster - Centrif. - Belt Drive	PNU/PU/PUH	VUBK	ACRUB	CUBE	FXB/FMX	BCRU	UBCA	5BDU	NCA-FA
STXB (UL-762)	Upblast Restaurant Hood Exhauster - Belt Drive	PNU-RG	VRBK	VCR	CUBE	FXBFT/FMBFT	BCRUR	CUBA	5BDU-762	NCA-HPFA
STXD	Upblast Roof Exhauster - Centrif. - Direct Drive	PDU	VUDK	ACRUD	CUJ	FX/FMX	DCRU	UDCA	5DDU	DU-HFA
CWD	Sidewall Centrifugal Exhaust - Direct Drive	PW	VWDK	ACWD	GW	WX/WA/WB	TCWX	CWDA	5DDW	-
AF/FF/FFC	Bathroom Fans & Cabinet Fans	V/VQ	VCDD	GEMINI-GC/GN	SP/CSP	ZEPHYR-Z	T/TL	CF/CFL	-	CFA-CA
KSFV	Filtered Fresh Air Supply Roof Fan	AFSI	V5BB	K3PB	K3U/RSF	MU	BCFS	CSF/SIS	5FSU	A-SERIES
ARE/ARS	Dome Axial Power Roof Exhaust/Supply	LQ	LEDA	AQD	AIS	DAE	-	SASD/SAED	5ADE/5ADS	DDAR-FA
GED	Sidewall Propeller Fan - Direct Drive	FQ/FN	LTDK/LZDK	APD/SWD	SE/SSI	P	TCPE	CDC	-	CEPRSM
LCE/LCS	Sidewall Propeller Fan - Belt Drive	DC/DCK	LWBA/LWBK	XLM/SWB	SBE/S 1&2	BIL/BFM/BBK	WPMB	C-SERIES	1RHR/1RHS	-
SOB	Inline Duct Fan - Centrifugal - Belt Drive	XB	VIBK	SGN-B/SQI-B	B5Q	SXB	B5T	SQBA	-	ISQB
SGD	Inline Duct Fan - Centrifugal - Direct Drive	XD	VIDK	SGN-D/SQI-D	SQ	SX	DSI	SQDA	-	-
RCXII	Non-powered Roof Vent - Round Dome	LQV	GSAA	PR	GRS	DR	GRV	ARVE	-	-
CM	Belt Driven Utility Vent Set	GBR	VBRA/VFBA	CPRD/CPFB	SFD/SFB/SWD	D	BCV	-	-	-





TOOLS AND RESOURCES

S&P USA has created tools to help you understand, find or select the right product and solution for your project.



SOCIAL MEDIA

S&P USA is active on Facebook, Instagram, LinkedIn + Twitter! Get behind the scenes with our company and receive company + product announcements!



NEW CUSTOMER APPLICATION
APPLY TO BE A NEW CUSTOMER WITH S&P USA.



IMPORTANT DATES
HOLIDAY CLOSURES



OPTISIZER 2
FAN SELECTION SOFTWARE



LITERATURE
BROCHURES, SUBMITTALS AND DOCUMENTS



CLAIM CENTER
RMA, FREIGHT CLAIM OR WARRANTY



REVIT FILES



CODE SOLUTIONS
MEET BUILDING CODES WITH S&P USA



PRINT SHOP
ORDER PRINTED LITERATURE



S&P UNIVERSITY
ACCESS CLASSES ABOUT S&P PRODUCTS



SCAN ME
FOR S&P USA



SCAN ME
FOR S&P CANADA



S&P USA Ventilation Systems, LLC

6393 Powers Avenue
Jacksonville, FL 32217
T. 904-731-4711 • F. 904-737-8322
www.solerpalau-usa.com

S&P Canada Ventilation Products, Inc.

6710 Maritz Drive Unit #7
Mississauga, ON L5W 0A1 - Canada
T. 416-744-1217 • F. 416-744-0887
www.solerpalaucanada.com

Soler&Palau
Ventilation Group