

### **MODEL FEATURES**

- MERV-8 filters
- Transformer/relay package allowing simple on/off control
- Access doors for easy access to blowers, core and filters
- Fully insulated case
- Large cores for high efficiency
- No condensate pan or drain required



---

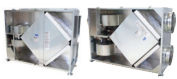
### **MODEL OVERVIEW**

With JencoFan's TRC (total recovery for commercial applications) Series for all climates, stale room air is exhausted and fresh outdoor air is brought back into the building. With this line of ERVs (Energy Recovery Ventilators) these two air streams are directed through a highly developed "air-to-air" energy exchange core. The air streams are physically separated by many layers of "plates" so there is no mixing or contamination of the fresh air. The plates are made of an engineered "resin" material that simultaneously transfers heat by conduction and humidity by attracting and moving water vapor from one air stream to the other.

JencoFan's TRCs moderate extremes in both temperature and humidity, creating a comfortable indoor environment. The unique moisture transfer capability of the JencoFan core also eliminates condensation and frost build up in most applications. Unlike other ERVs on the market no mechanical or electrical defrost systems are needed, which means higher heat recovery efficiencies, easier installation and more reliable operation.

**10-year industry best core warranty. 2-year warranty on balance of unit.**

All specifications are subject to change without notice unless approved in submittal by JencoFan.



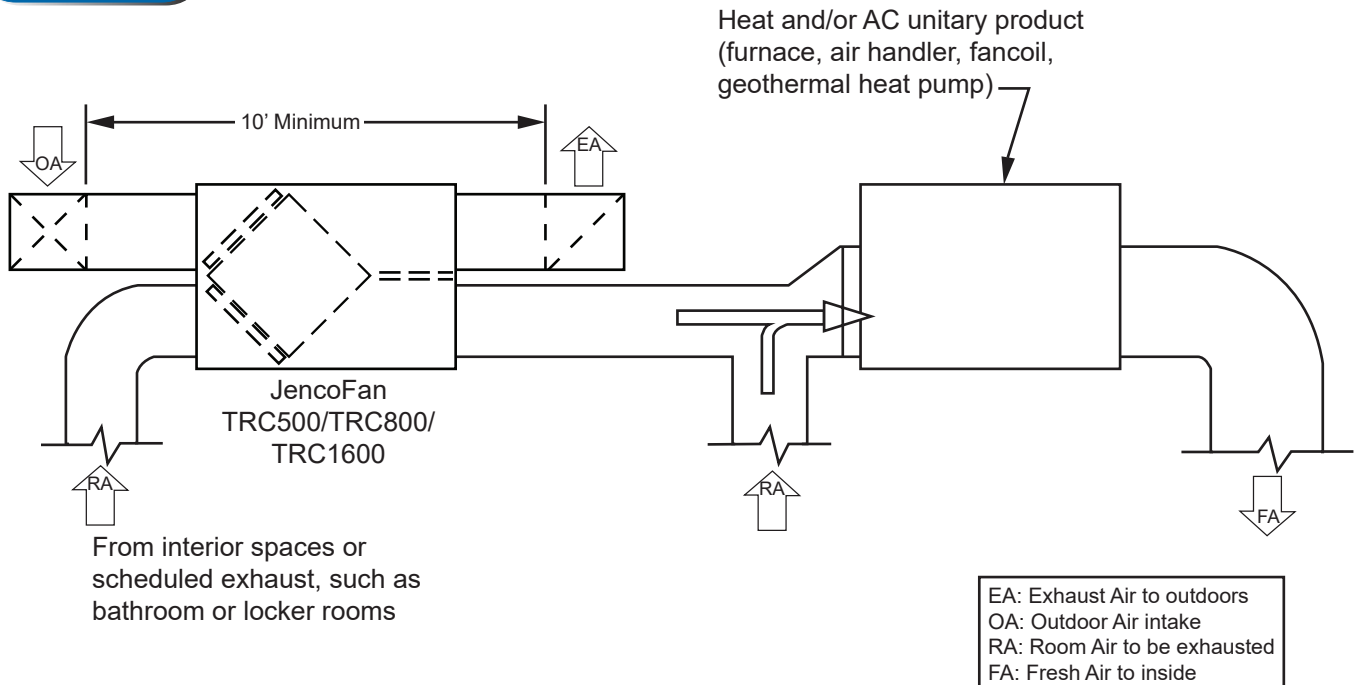
## MODEL TRC

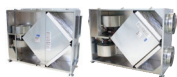
TOTAL RECOVERY FOR ALL CLIMATES - COMMERCIAL APPLICATIONS



# STANDARD SPECIFICATIONS AND FEATURES

- AHRI certified performance data for efficiency and cross leakage.
- UL tested flammability and smoke generation that meets NFPA 90A and 90B test standards for commercial applications.
- Easy installation and service.
- Easiest maintenance of any ERV
- MERV-8 filters (2 in the TRC500 & TRC800, 4 in the TRC1200 & TRC1600)
- Transformer/relay package allowing simple on/off control
- Access doors for easy access to blowers, core and filters
- TRC500 & TRC800 have integral mounting flange and hanging bracket system
- TRC1200 & TRC1600 have mounting feet for installation at floor level
- 2 Direct Drive, TEFC, Premium Efficient blower motors in the TRC500, TRC800, & TRC1200
- 2 Belt Drive, TEFC, Premium Efficient blower motors in the TRC1600
- Fully insulated case
- Large cores for high efficiency
- No condensate pan or drain required
- **10-year** industry best core warranty
- 2-year warranty on balance of unit





## CONTROLS

These controls are intended to turn JencoFan commercial energy recovery ventilation systems on and off at appropriate times. Specification, installation and set-up is an easy process. The TRC units come standard with a 24 volt transformer/relay package for easy interface with all controls.

It is not necessary that JencoFan controls be used to operate JencoFan units. A wide range of controls or building automation systems may be used.

The JencoFan residential (TR) units have their own line of compatible controls that are not intended to operate JencoFan commercial (TRC) units.

### **STC7D-W - Digital Time Clock - Wall Mount**



- Up to 8 on/off cycles per day or 56 per week
- 24 VAC power requirement
- Battery back-up
- Fits any 4" x 4" electrical box

### **SMC-C - Motion (Occupancy) Control - Ceiling Mount**



- Passive infrared sensor
- Adjustable time-off delay to 30 minutes
- 24 VAC power requirement
- Covers up to 1500 sq. ft. floor space  
*walking motion coverage up to 22 foot radius*

### **SCO2-W - Carbon Dioxide Control - Wall Mount**

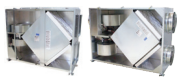


- Adjustable control from 600-2000 PPM
- Digital display
- 24 VAC power requirement
- Computer/BAS interface for information and control
- Self calibrates during periods of low occupancy

### **SHW-20 - Dehumidistat**



- Rotary dial dehumidistat
- Turn the dial to set desired humidity level
- Designed for convenient installation in bathrooms, kitchen or laundry room
- Dehumidifies when inside air is more humid than the set point
- **Caution:** the outside air must be less humid than the indoor air for this to work.



**MODEL TRC**

TOTAL RECOVERY FOR ALL CLIMATES - COMMERCIAL APPLICATIONS

**TRC500**



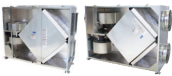
**Performance**

Airflow CFM	ESP in H <sub>2</sub> O	Watts	Temp EFF%	Total EFF% Winter/Summer*
225	1.25	335	81	76/66
338	1.00	420	77	71/61
380	0.90	470	75	69/59
450	0.65	550	73	66/56
540	0.25	640	70	62/52
575	0.00	690	69	61/51
600	-0.25	735	68	60/50

\* At AHRI 1060 standard conditions  
(see certified data on page 69 for core components.)  
Note: Watts is for the entire unit.

**Specifications**

Ventilation Type: Static Plate, Heat and Humidity Transfer					
Typical Airflow Range: 200-540 CFM					
AHRI 1060 Certified Core: One L85					
Airflow Rating Points (for AHRI): 450 CFM and 338 CFM					
Motors: One, 0.6 hp (Single Phase)					
V	Hz	Phase	FLA	Min. Cir. Amps	Max. Overcurrent Protection Device
115	60	Single	7.0	8.8	15
208-230	60	Single	3.5	4.4	15
Standard Features: 24 VAC Transformer/Relay Package					
Filters: Two total, MERV 8, 2" pleated, 14" x 20" nominal size					
Weight: 141 lbs (unit), 160 lbs (in carton) 200 lbs (on pallet), up to 3 units on 40 lb pallet					
Shipping Dimensions: 48" L x 41" W x 18" H (in carton) 55" L x 42" W x 22" H (on pallet)					



MODEL TRC

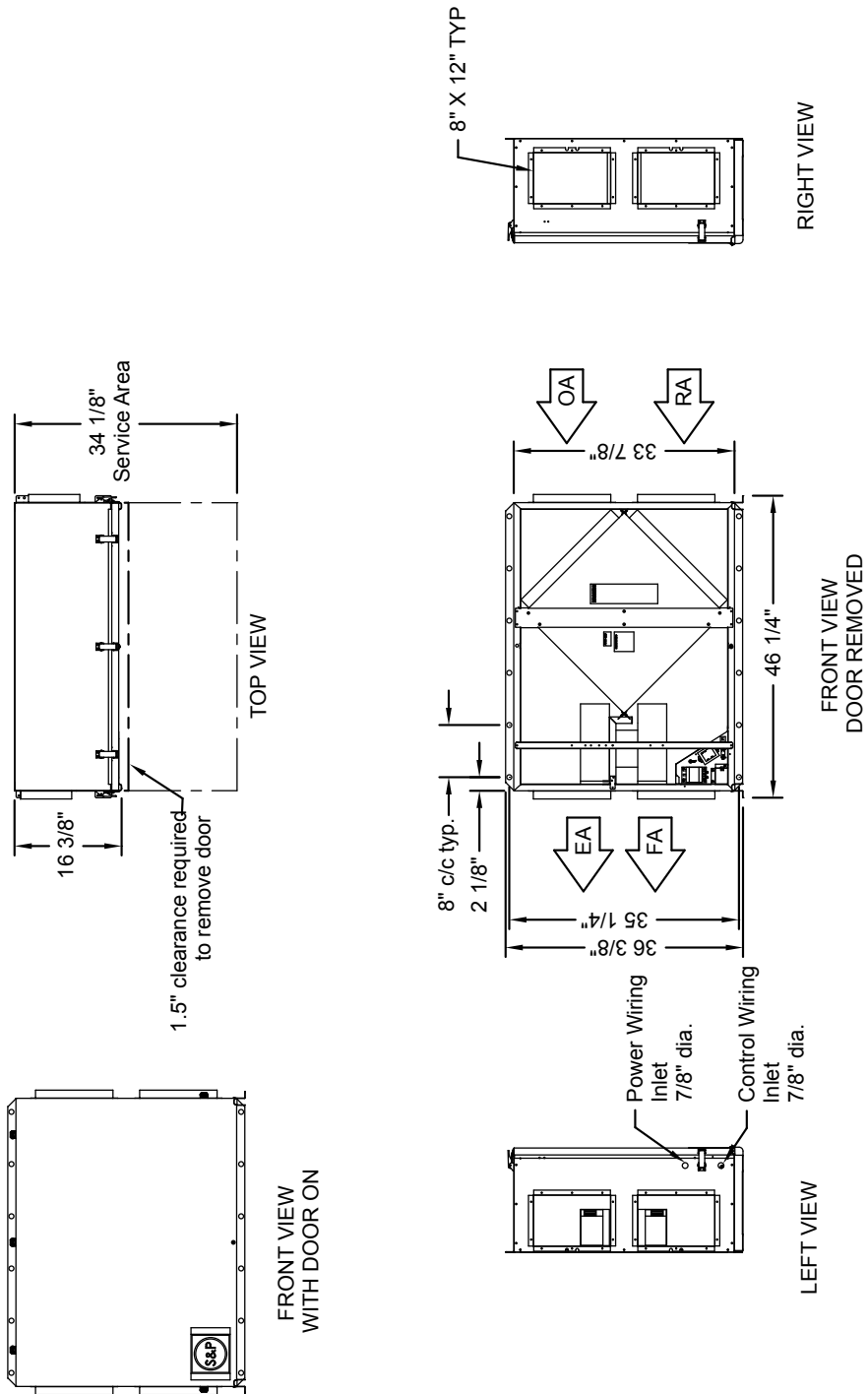
TOTAL RECOVERY FOR ALL CLIMATES - COMMERCIAL APPLICATIONS

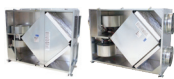
JencoFan

# TRC500

## Dimensions

EA: Exhaust Air to outdoors  
 OA: Outdoor Air intake  
 RA: Room Air to be exhausted  
 FA: Fresh Air to inside





**MODEL TRC**

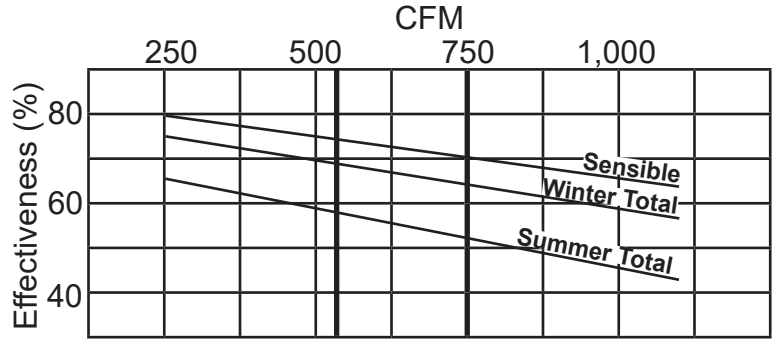
TOTAL RECOVERY FOR ALL CLIMATES - COMMERCIAL APPLICATIONS



**TRC800**



**Performance**



\* At AHRI 1060 standard conditions  
(see certified data on page 69 for core components.)

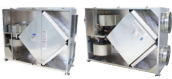
**Specifications**

Ventilation Type: Static Plate, Heat and Humidity Transfer					
Typical Airflow Range: 250-925 CFM					
AHRI 1060 Certified Core: One L125-00					
Airflow Rating Points (for AHRI): 750 CFM and 563 CFM					
Number Motors: Two direct drive blower/motor packages					
V	Hz	Phase	FLA (per motor)	Min. Cir. Amps	Max. Overcurrent Protection Device
115	60	Single	9.0	20.3	25
208-230	60	Single	4.5	10.1	15
Standard Features: 24 VAC Transformer/Relay Package					
Filters: Two total, MERV 8, 2" pleated, 20" x 20" nominal size					
Weight: 211 lbs (unit), 300 lbs (shipping weight, on pallet)					
Shipping Dimensions: 62" L x 48" W x 40" H					

**Airflow Performance**

Motor HP Phase	External Static Pressure (Inches Water Column)						
	0.0	0.25	0.5	0.75	0.9	1.25	1.5
0.75	970 CFM	925 CFM	860 CFM	795 CFM	750 CFM	635 CFM	480 CFM
Single Phase	1,490 Watts	1,375 Watts	1,270 Watts	1,160 Watts	1,090 Watts	950 Watts	825 Watts

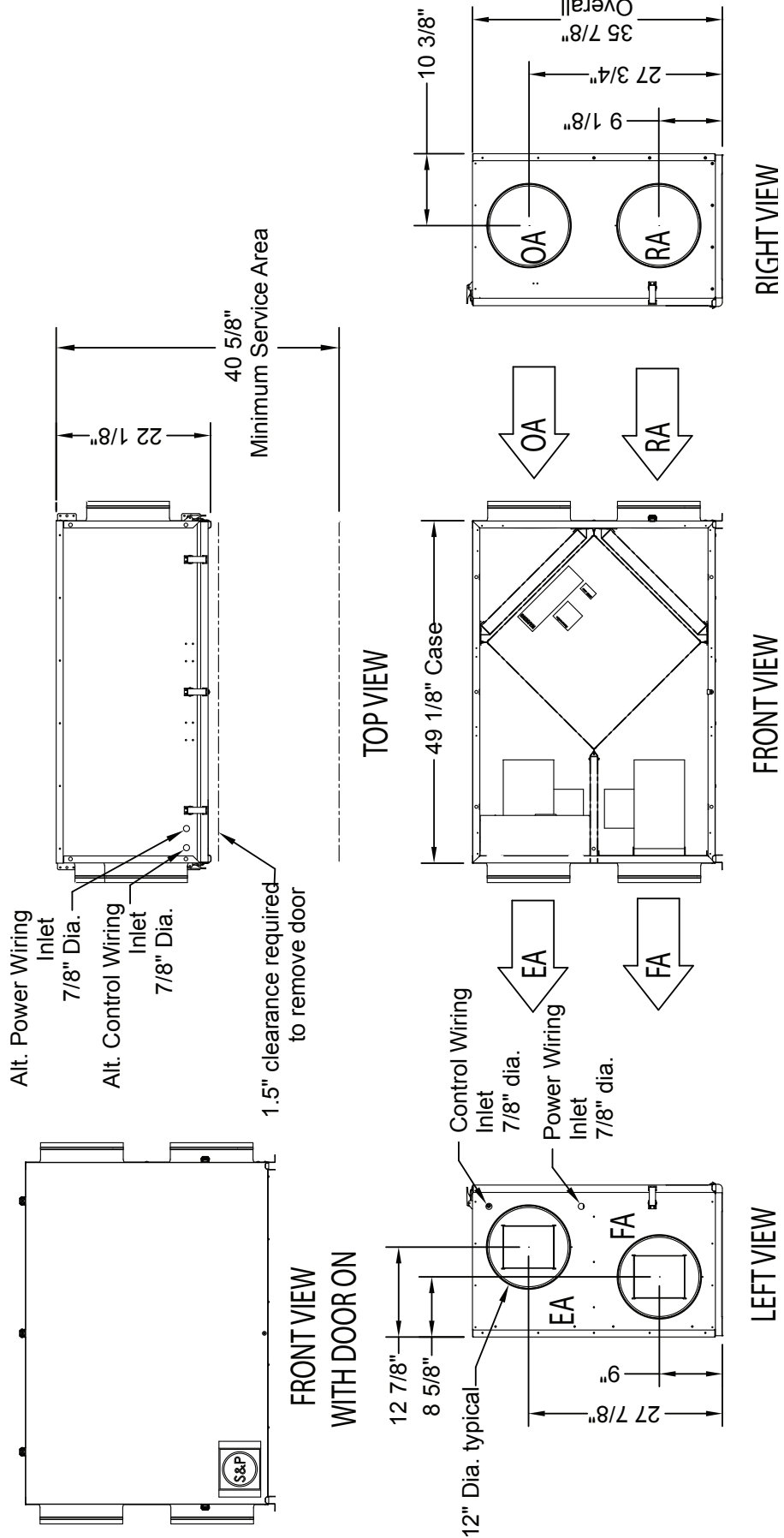
Note: Watts is for the entire unit (two motors).

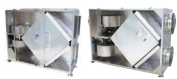


# TRC800

## Dimensions

EA: Exhaust Air to outdoors  
 OA: Outdoor Air intake  
 RA: Room Air to be exhausted  
 FA: Fresh Air to inside





**MODEL TRC**

TOTAL RECOVERY FOR ALL CLIMATES - COMMERCIAL APPLICATIONS



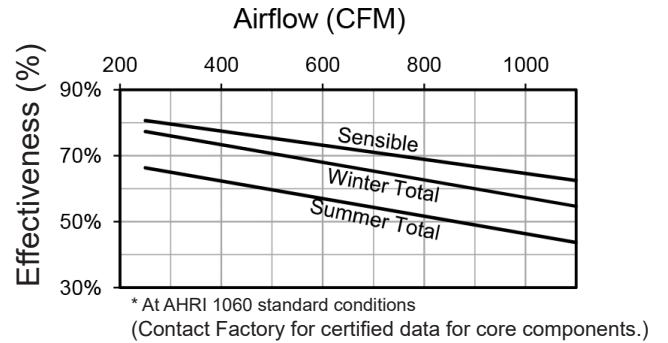
**TRC800V**



**Specifications**

Ventilation Type: Static Plate, Heat and Humidity Transfer					
Typical Airflow Range: 250-925 CFM					
AHRI 1060 Certified Core: One L125-G5					
Airflow Rating Points (for AHRI): 750 CFM and 563 CFM					
Number Motors: Two direct drive blower/motor packages					
V	Hz	Phase	FLA (per motor)	Min. Cir. Amps	Max. Overcurrent Protection Device
120	60	Single	9.0	20.3	25
208-230	60	Single	4.5	10.1	15
Standard Features: Non-Fused Disconnect 24 VAC Transformer/Relay Package					
Filters: Two total, MERV 8, 2" pleated, 20" x 20" nominal size					
Weight: 207 lbs (unit), 325 lbs (shipping weight, on pallet)					
Shipping Dimensions: 30" L x 42" W x 71" H					

**Performance**

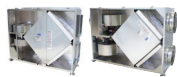


**Airflow Performance**

Motor HP Phase	External Static Pressure (Inches Water Column)						
	0.0	0.25	0.5	0.75	0.9	1.25	1.5
0.75	970 CFM	925 CFM	860 CFM	795 CFM	750 CFM	635 CFM	480 CFM
Single Phase	1,490 Watts	1,375 Watts	1,270 Watts	1,160 Watts	1,090 Watts	950 Watts	825 Watts

Note: Watts is for the entire unit (two motors).





**TRC800V**

**Dimensions**

**ABBREVIATIONS**

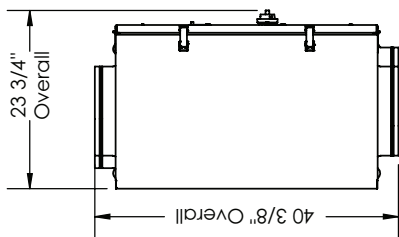
- EA: Exhaust Air to Outside
- OA: Outside Air Intake
- RA: Room Air to be Exhausted
- FA: Fresh Air to Inside

**INSTALLATION ORIENTATION**

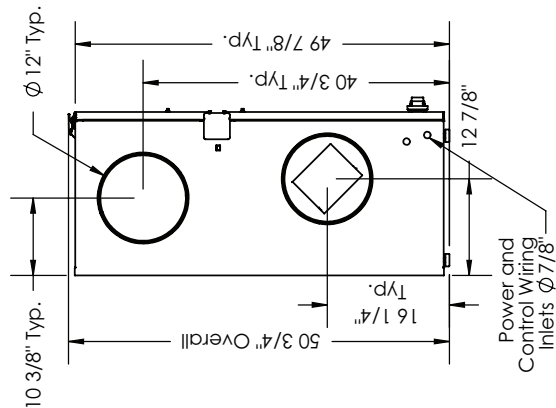
Unit may be installed in any orientation.

**NOTE**

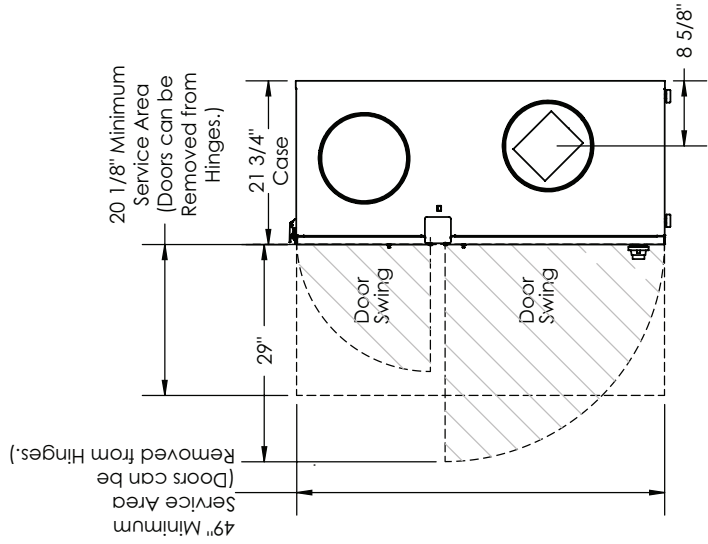
UNLESS OTHERWISE SPECIFIED, DIMENSIONS ARE ROUNDED TO THE NEAREST EIGHTH OF AN INCH.



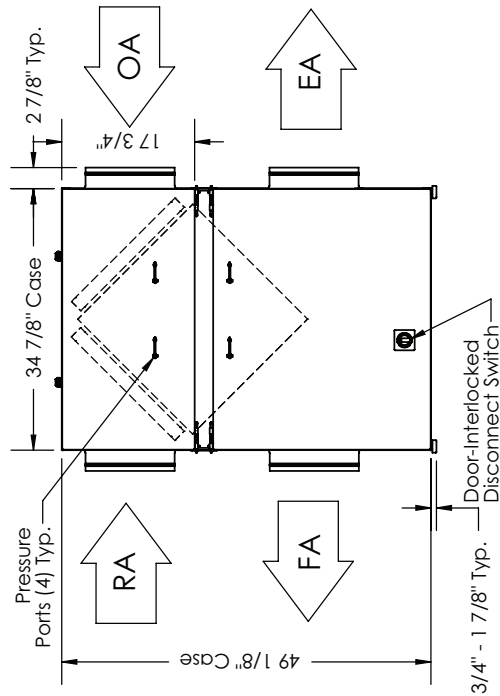
TOP VIEW



LEFT VIEW



RIGHT VIEW



FRONT VIEW

**TRCe800V**



**Specifications**

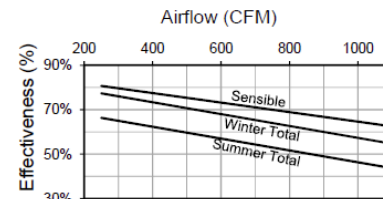
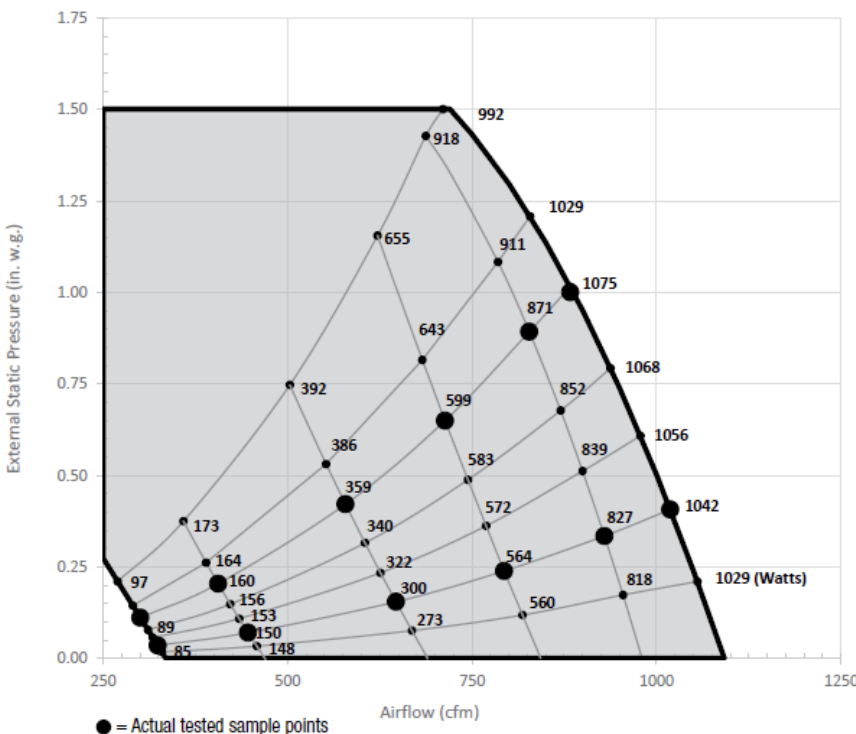
Ventilation Type: Static Plate, Heat and Humidity Transfer					
Typical Airflow Range: 250-1,100 CFM					
AHRI 1060 Certified Core: One L125-G5					
Airflow Rating Points (for AHRI): 750 CFM and 563 CFM					
Motors: Two, 0.5 HP, Direct Drive EC blower/motor package					
V	Hz	Phase	FLA (per motor)	Min. Cir. Amps	Max. Overcurrent Protection Device
120	60	Single	8.1	18.2	25
208-230	60	Single	4.8	10.8	15
Standard Features: Non-Fused Disconnect 24 VAC Transformer/Relay Package					
Filters: Two total, MERV 8, 2" pleated, 20" x 20" nominal size					
Weight: 207 lbs (unit), 325 lbs (shipping weight, on pallet)					
Shipping Dimensions: 30" L x 42" W x 71" H					

**Core Performance**

Airflow CFM	ESP in H <sub>2</sub> O	Watts
324	0.04	86
446	0.07	150
647	0.15	300
794	0.24	564
929	0.33	827
1019	0.41	1042
300	0.11	91
406	0.20	160
579	0.42	359
713	0.65	599
828	0.89	871
883	1.00	1075

Note: Watts is for the entire unit.  
Note: Airflow performance includes effect of clean, standard filter supplied with unit.

**Performance**



At AHRI 1060 standard conditions. See all AHRI certified ratings at [www.ahrinet.org](http://www.ahrinet.org).

**TRCe800V**

**Dimensions**

**ABBREVIATIONS**

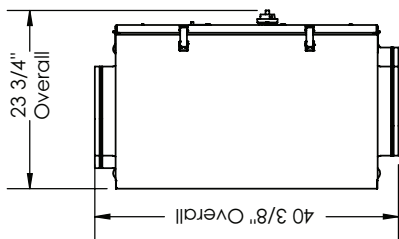
- EA: Exhaust Air to Outside
- OA: Outside Air Intake
- RA: Room Air to be Exhausted
- FA: Fresh Air to Inside

**INSTALLATION ORIENTATION**

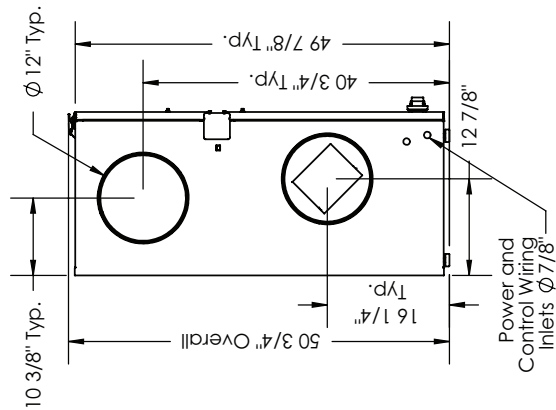
Unit may be installed in any orientation.

**NOTE**

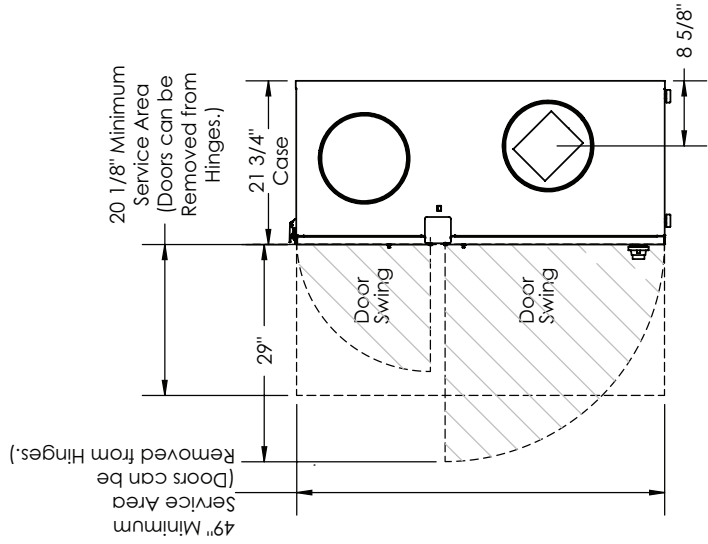
UNLESS OTHERWISE SPECIFIED, DIMENSIONS ARE ROUNDED TO THE NEAREST EIGHTH OF AN INCH.



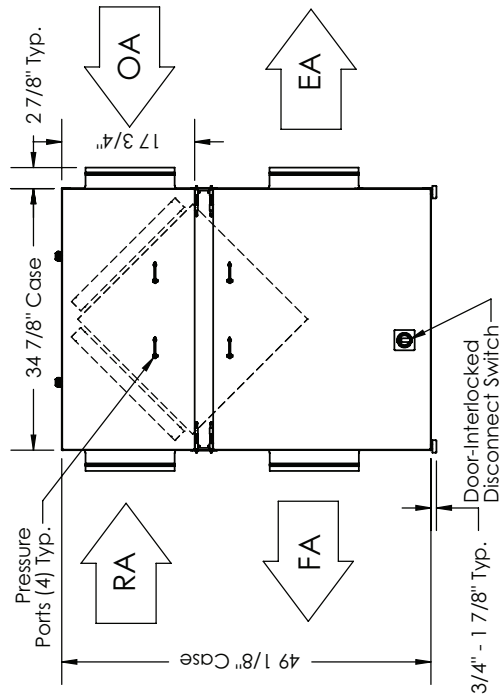
**TOP VIEW**



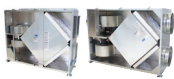
**LEFT VIEW**



**RIGHT VIEW**



**FRONT VIEW**

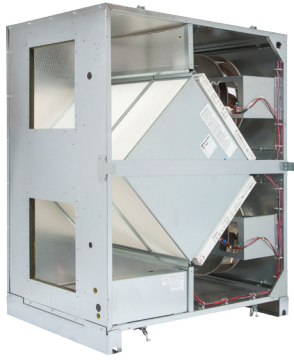


**MODEL TRC**

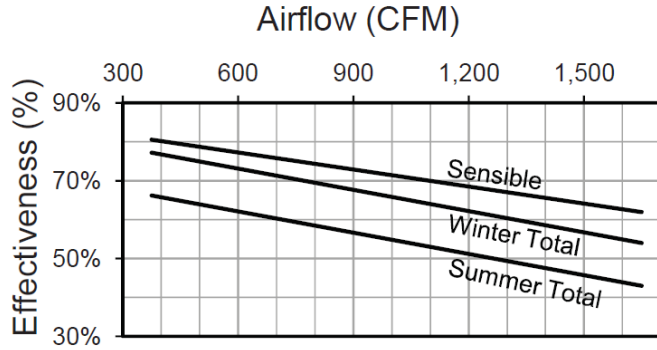
TOTAL RECOVERY FOR ALL CLIMATES - COMMERCIAL APPLICATIONS



**TRC1200**



**Performance**



\* At AHRI 1060 standard conditions. See all AHRI certified ratings at [www.ahrinet.org](http://www.ahrinet.org).

**Specifications**

Ventilation Type: Static Plate, Heat and Humidity Transfer						
Typical Airflow Range: 375-1,575 CFM						
AHRI 1060 Certified Cores: One L62-G5 and one L125-G5						
Motors: Qty 2, 1.0 HP ea., Direct Drive motorized impeller packages						
Drive HP	V	Hz	Phase	FLA (per motor)	Min. Cir. Amps	Max. Overcurrent Protection Device
1.0	120	60	Single	6.5	14.6	20
	208-230	60	Single	3.3-3.4	7.7	15
	208-230	60	Three	2.2-2.2	5.0	15
	460	60	Three	1.1	2.5	15
Standard Features: 24 VAC Transformer/Relay Package						
Filters: Total Qty. 4, MERV 8: (2) 14" x 20" x 2" and (2) 16" x 20" x 2"						
Dimensions & Weight: 45 1/8" L x 33 1/2" W x 53 5/8" H, 337 lbs.						
Shipping Dimensions & Weight (on pallet): 70" L x 47" W x 58 5/8" H, 403 lbs.						

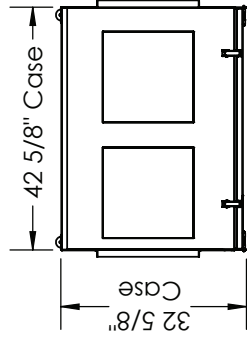
**Airflow Performance**

Motor HP Phase	External Static Pressure (Inches Water Column)						
	0.0	0.25	0.50	0.75	1.00	1.25	1.50
1.0 Single Phase	1,575 CFM	1,470 CFM	1,350 CFM	1,225 CFM	1,090 CFM	950 CFM	795 CFM
	1,545 Watts	1,525 Watts	1,500 Watts	1,475 Watts	1,435 Watts	1,380 Watts	1,300 Watts
1.0 Three Phase	1,675 CFM	1,570 CFM	1,435 CFM	1,280 CFM	1,115 CFM	940 CFM	760 CFM
	1,410 Watts	1,400 Watts	1,380 Watts	1,340 Watts	1,280 Watts	1,210 Watts	1,135 Watts

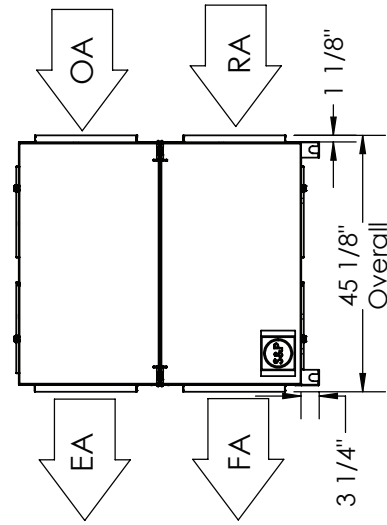
**TRC1200**

**Dimensions**

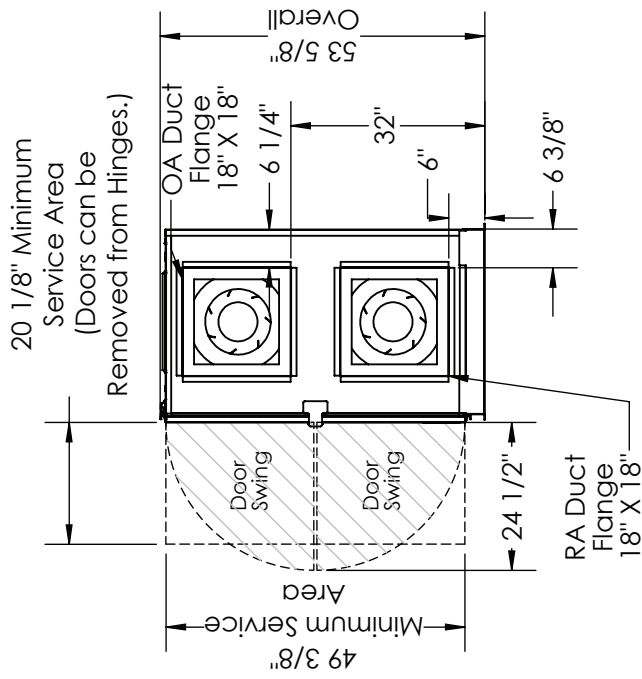
EA: Exhaust Air to outdoors  
 OA: Outdoor Air intake  
 RA: Room Air to be exhausted  
 FA: Fresh Air to inside



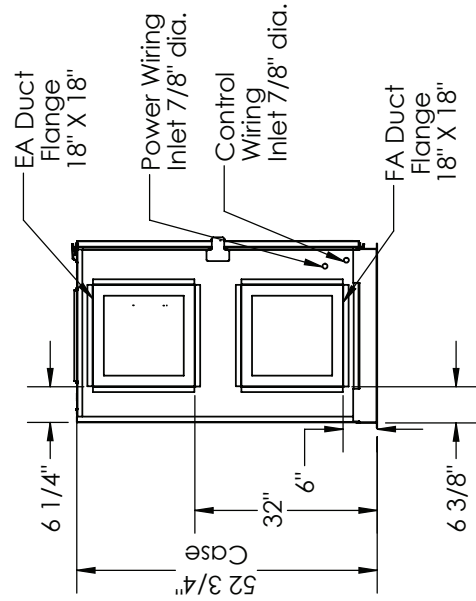
TOP VIEW



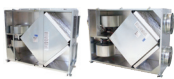
FRONT VIEW



RIGHT VIEW



LEFT VIEW

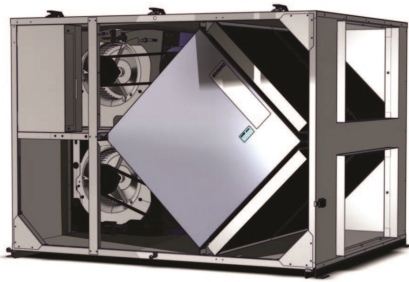


**MODEL TRC**

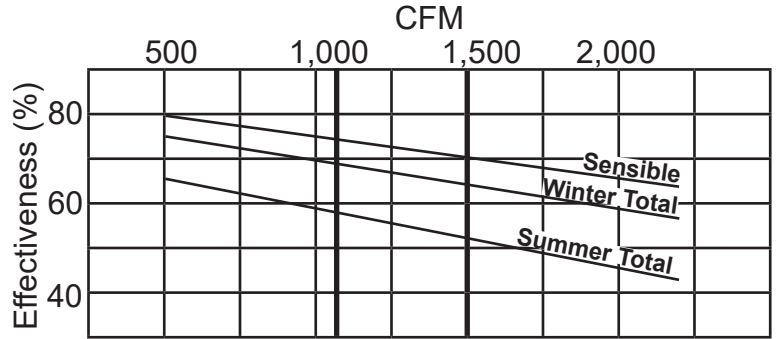
TOTAL RECOVERY FOR ALL CLIMATES - COMMERCIAL APPLICATIONS



**TRC1600**



**Performance**



\* At AHRI 1060 standard conditions  
(see certified data on page 69 for core components.)

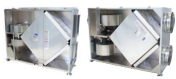
**Specifications**

Ventilation Type: Static Plate, Heat and Humidity Transfer						
Typical Airflow Range: 500-2,025 CFM						
AHRI 1060 Certified Core: Two L125-00						
Airflow Rating Points (for AHRI): 1,500 CFM and 1,126 CFM						
Number Motors: Two belt drive blower/motor packages with adjustable sheaves						
Drive HP	V	Hz	Phase	FLA (per motor)	Min. Cir. Amps	Max. Overcurrent Protection Device
1.5	115	60	Single	15.2	34.2	45
	208-230	60	Single	8.2-7.6	18.5	25
	208-230	60	Three	4.6-4.8	10.8	15
	460	60	Three	2.4	5.4	15
Standard Features: Totally Enclosed Premium Efficiency Motors Motor Starters, 24 VAC Transformer/Relay Package						
Filters: Four total, MERV 8, 2" pleated, 20" x 20" nominal size						
Weight: 414 lbs (unit), 505 lbs (shipping weight, on pallet)						
Shipping Dimensions: 72" L x 48" W x 40" H						

**Airflow Performance**

Motor HP	Blower RPM	Turns Open	External Static Pressure (in w.g.)													
			0.0		0.25		0.5		0.75		0.9		1.25		1.5	
			SCFM	BHP	SCFM	BHP	SCFM	BHP	SCFM	BHP	SCFM	BHP	SCFM	BHP	SCFM	BHP
1.5	1148	4	1592	0.7	1480	0.7	1320	0.6	1120	0.5	800	0.4	-	-	-	-
	1304	2	1809	1.0	1720	1.0	1600	0.9	1410	0.8	1250	0.7	975	0.6	630	0.4
	1460	0	2025	1.5	1950	1.4	1845	1.3	1715	1.2	1540	1.1	1400	1.0	1165	0.8

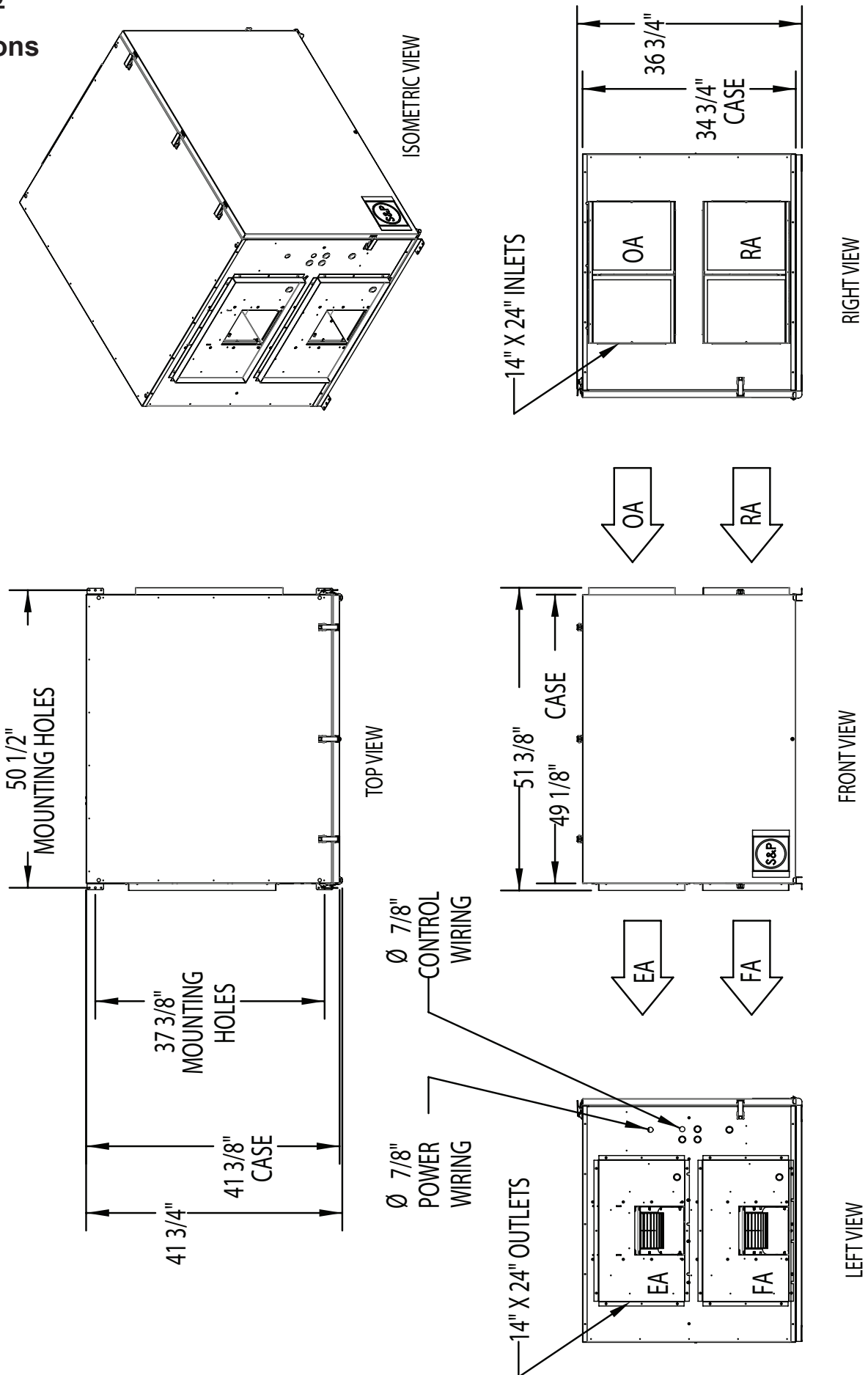
Note: Brake Horse Power (BHP) is for one blower motor package only.

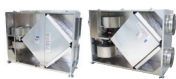


# TRC1600

## Dimensions

EA: Exhaust Air to outdoors  
 OA: Outdoor Air intake  
 RA: Room Air to be exhausted  
 FA: Fresh Air to inside





**AHRI 1060-2005 - CERTIFIED PERFORMANCE**

AHRI-1060 Certified Performance - Model Number L85-G5 (used in TRC500)													
Type		Tilt Angle				Nominal Airflow				Pressure Drop			
Plate		N/A				100% - 450 SCFM				0.6 in. H <sub>2</sub> O			
						75% - 338 SCFM				0.5 in. H <sub>2</sub> O			

Leakage Ratings					Thermal Effectiveness Ratings at 0" Pressure Differential								
	Pressure Differential	EATR	OACF	Purge Angle or Setting	Nominal Airflow		Sensible	Latent	Total	Net Airflow	Net Sensible	Net Latent	Net Total
Test 1	-1 in. H <sub>2</sub> O	1.0%	1.00	N/A	450 CFM	Heating	73%	53%	66%	450 CFM	73%	53%	66%
						Cooling	73%	46%	56%		73%	46%	56%
Test 2	0 in. H <sub>2</sub> O	0.0%	1.02	N/A	338 CFM	Heating	77%	60%	71%	338 CFM	77%	60%	71%
						Cooling	77%	52%	61%		77%	52%	61%

AHRI-1060 Certified Performance - Model Number L125-G5 (used in TRC800, TRC1200 & TRC1600)													
Type		Tilt Angle				Nominal Airflow				Pressure Drop			
Plate		N/A				100% - 750 SCFM				0.65 in. H <sub>2</sub> O			
						75% - 563 SCFM				0.45 in. H <sub>2</sub> O			

Leakage Ratings					Thermal Effectiveness Ratings at 0" Pressure Differential								
	Pressure Differential	EATR	OACF	Purge Angle or Setting	Nominal Airflow		Sensible	Latent	Total	Net Airflow	Net Sensible	Net Latent	Net Total
Test 1	-1 in. H <sub>2</sub> O	1.0%	1.00	N/A	750 CFM	Heating	71%	52%	64%	750 CFM	71%	52%	64%
						Cooling	71%	43%	53%		71%	43%	53%
Test 2	0 in. H <sub>2</sub> O	0.0%	1.02	N/A	563 CFM	Heating	75%	59%	69%	563 CFM	75%	59%	69%
						Cooling	75%	50%	59%		75%	50%	59%

NOTE: SCFM = Standard Cubic Feet per Minute OACF = Outdoor Air Correction Factor EATR = Exhaust Air Transfer Ratio N/A = Not Applicable

Energy recovery components certified in accordance with AHRI Standard 1060-2005. Actual Performance in packaged equipment may vary.

