

MODEL TRC

TOTAL RECOVERY FOR ALL CLIMATES

COMMERCIAL APPLICATIONS

JencoFan's TRCs moderate extremes in both temperature and humidity, creating a comfortable indoor environment. The unique moisture transfer capability of the JencoFan core also eliminates condensation and frost build up in most applications. No mechanical or electrical defrost systems are needed, which means higher heat recovery efficiencies, easier installation and more reliable operation.

Standard Specifications and Features

- AHRI certified performance data for efficiency and cross leakage.
- UL tested flammability and smoke generation that meets NFPA 90A and 90B test standards for commercial applications.
- Easy installation and service.
- Easiest maintenance of any ERV
- MERV-8 filters (2 in the TRC500 & TRC800, 4 in the TRC1600)
- Non-Fused disconnect
- Transformer/relay package allowing simple on/off control
- Access doors for easy access to blowers, core and filters
- TRC500 & TRC800 have integral mounting flange and hanging bracket system
- TRC1600 has mounting feet for installation at floor level
- 2 Direct Drive, TEFC, Premium Efficient blower motors in the TRC500 and TRC800
- 2 Belt Drive, TEFC, Premium Efficient blower motors in the TRC1600
- Fully insulated case
- Large cores for high efficiency
- No condensate pan or drain required
- **10-year** industry best core warranty
- 2-year warranty on balance of unit



RECOVERY VENTILATORS

TRC Controls

Stock No.	Control	Description
STC7D-W ●	Digital Time Clock - Wall Mount	<ul style="list-style-type: none"> • Up to 8 on/off cycles per day or 56 per week • 24 VAC power requirement • Battery back-up • Fits any 4" x 4" electrical box
SMC-C ●	Motion (Occupancy) Control - Ceiling Mount	<ul style="list-style-type: none"> • Passive infrared sensor • Adjustable time-off delay to 30 minutes • 24 VAC power requirement • Covers up to 1500 sq. ft. floor space <i>walking motion coverage up to 22 foot radius</i>
SCO2-W ●	Carbon Dioxide Control - Wall Mount	<ul style="list-style-type: none"> • Adjustable control from 600-2000 PPM • Digital display • 24 VAC power requirement • Computer/BAS interface for information and control • Self calibrates during periods of low occupancy

These controls are intended to turn JencoFan commercial energy recovery ventilation systems on and off at appropriate times. Specification, installation and set-up is an easy process. The TRC units come standard with a 24 volt transformer/relay package for easy interface with all controls.

It is not necessary that JencoFan controls be used to operate JencoFan units. A wide range of controls or building automation systems may be used. Additionally, TRC800 units are "VFD Ready" as a standard feature.

The JencoFan residential (TR) units have their own line of compatible controls that are not intended to operate JencoFan commercial (TRC) units.

Ship Schedules:
● Next Day Shipment From Stock

Please refer to the General Catalog or contact the Factory for our Full Line of products available on standard shipping schedules.

Model TRC500



Performance

Airflow CFM	ESP in H ₂ O	Watts	Temp EFF%	Total EFF% Winter/Summer*
225	1.25	335	81	76/66
338	1.00	420	77	71/61
380	0.90	470	75	69/59
450	0.65	550	73	66/56
540	0.25	640	70	62/52
575	0.00	690	69	61/51
600	-0.25	735	68	60/50

* At AHRI 1060 standard conditions
(see certified data in full TR/TRC brochure for core components.)
Note: Watts is for the entire unit.

RECOVERY VENTILATORS

Specifications

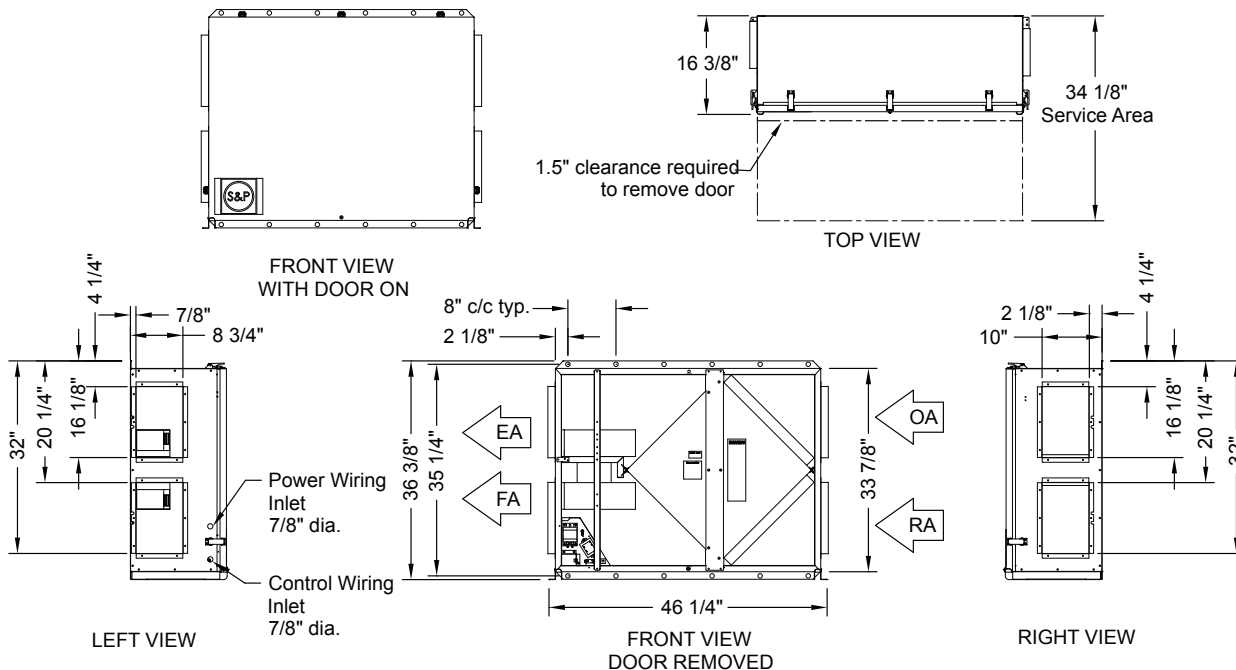
Ventilation Type: Static Plate, Heat and Humidity Transfer						
Typical Airflow Range: 200-540 CFM						
AHRI 1060 Certified Core: One L85						
Airflow Rating Points (for AHRI): 450 CFM and 338 CFM						
Motors: One, 0.6 hp (Single Phase)						
V	Hz	Phase	FLA	Min. Cir. Amps	Max. Overcurrent Protection Device	Stock No.
115	60	Single	7.0	8.8	15	TRC500-115 ●
208-230	60	Single	3.5	4.4	15	TRC500-230 ●
Standard Features: Non-Fused Disconnect 24 VAC Transformer/Relay Package						
Filters: Two total, MERV 8, 2" pleated, 14" x 20" nominal size						
Weight: 141 lbs (unit), 160 lbs (in carton) 200 lbs (on pallet), up to 3 units on 40 lb pallet						
Shipping Dimensions: 48" L x 41" W x 18" H (in carton) 55" L x 42" W x 22" H (on pallet)						



Ship Schedules:
● Next Day Shipment From Stock

EA: Exhaust Air to outdoors
OA: Outdoor Air intake
RA: Room Air to be exhausted
FA: Fresh Air to inside

DIMENSIONAL DATA

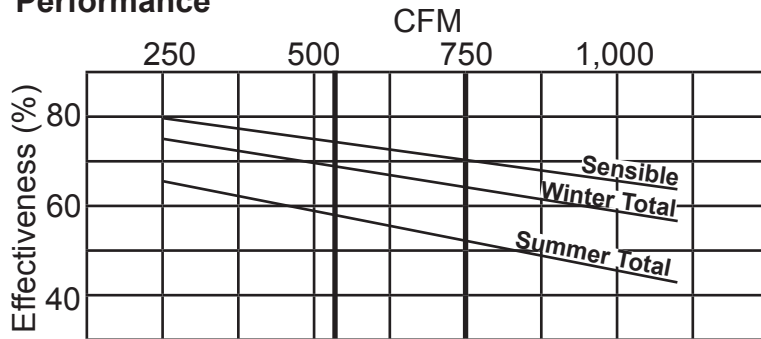


Please refer to the General Catalog or contact the Factory for our Full Line of products available on standard shipping schedules.

Model TRC800



Performance



* At AHRI 1060 standard conditions
(see certified data in full TR/TRC brochure for core components.)

Specifications

Ventilation Type: Static Plate, Heat and Humidity Transfer						
Typical Airflow Range: 250-925 CFM						
AHRI 1060 Certified Core: One L125-00						
Airflow Rating Points (for AHRI): 750 CFM and 563 CFM						
Number Motors: Two direct drive blower/motor packages						
V	Hz	Phase	FLA (per motor)	Min. Cir. Amps	Max. Overcurrent Protection Device	Stock No.
115	60	Single	9.0	20.3	25	TRC800-115 ●
208-230	60	Single	4.5	10.1	15	TRC800-230 ●
Standard Features: Non-Fused Disconnect 24 VAC Transformer/Relay Package						
Filters: Two total, MERV 8, 2" pleated, 20" x 20" nominal size						
Weight: 211 lbs (unit), 300 lbs (shipping weight, on pallet)						
Shipping Dimensions: 62" L x 48" W x 40" H						



Ship Schedules:
● Next Day Shipment From Stock

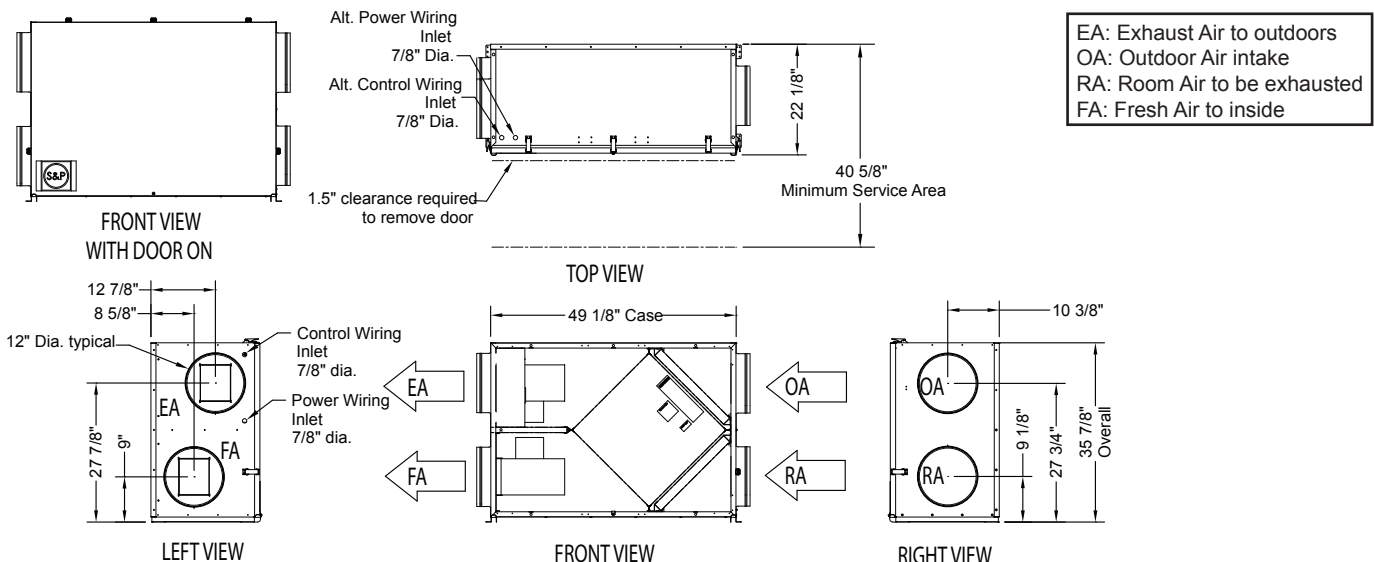
RECOVERY VENTILATORS

Airflow Performance

Motor HP Phase	External Static Pressure (Inches Water Column)						
	0.0	0.25	0.5	0.75	0.9	1.25	1.5
0.75	970 CFM	925 CFM	860 CFM	795 CFM	750 CFM	635 CFM	480 CFM
Single Phase	1,490 Watts	1,375 Watts	1,270 Watts	1,160 Watts	1,090 Watts	950 Watts	825 Watts

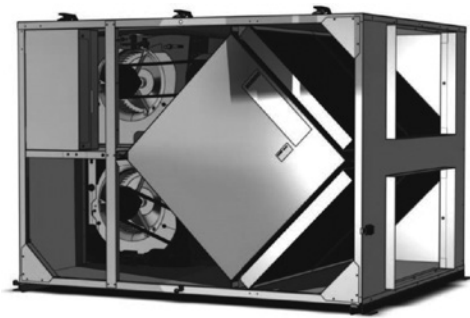
Note: Watts is for the entire unit (two motors).

DIMENSIONAL DATA

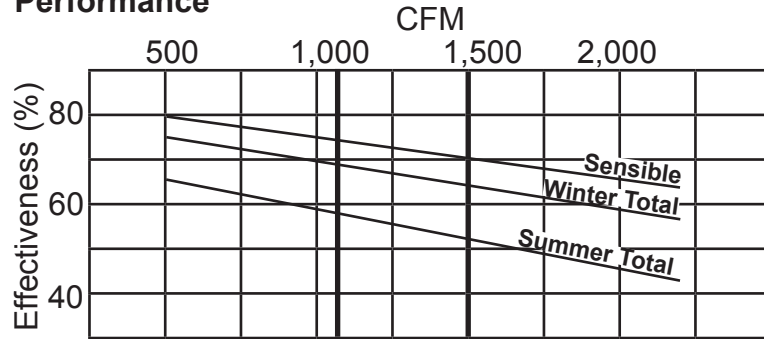


Please refer to the General Catalog or contact the Factory for our Full Line of products available on standard shipping schedules.

Model TRC1600



Performance



* At AHRI 1060 standard conditions

RECOVERY VENTILATORS

Specifications

Ventilation Type: Static Plate, Heat and Humidity Transfer							
Typical Airflow Range: 500-2,025 CFM							
AHRI 1060 Certified Core: Two L125-00							
Airflow Rating Points (for AHRI): 1,500 CFM and 1,126 CFM							
Number Motors: Two belt drive blower/motor packages with adjustable sheaves							
Drive HP	V	Hz	Phase	FLA (per motor)	Min. Cir. Amps	Max. Overcurrent Protection Device	Stock No.
1.5	115	60	Single	15.2	34.2	45	TRC1600-115 ●
	208-230	60	Single	8.2-7.6	18.5	25	TRC1600-230 ●
	208-230	60	Three	4.6-4.8	10.8	15	TRC1600-230-3P ●
	460	60	Three	2.4	5.4	15	TRC1600-460-3P ●
Standard Features: Totally Enclosed Premium Efficiency Motors Motor Starters, Non-fused Disconnect 24 VAC Transformer/Relay Package							
Filters: Four total, MERV 8, 2" pleated, 20" x 20" nominal size							
Weight: 414 lbs (unit), 505 lbs (shipping weight, on pallet)							
Shipping Dimensions: 72" L x 48" W x 40" H							

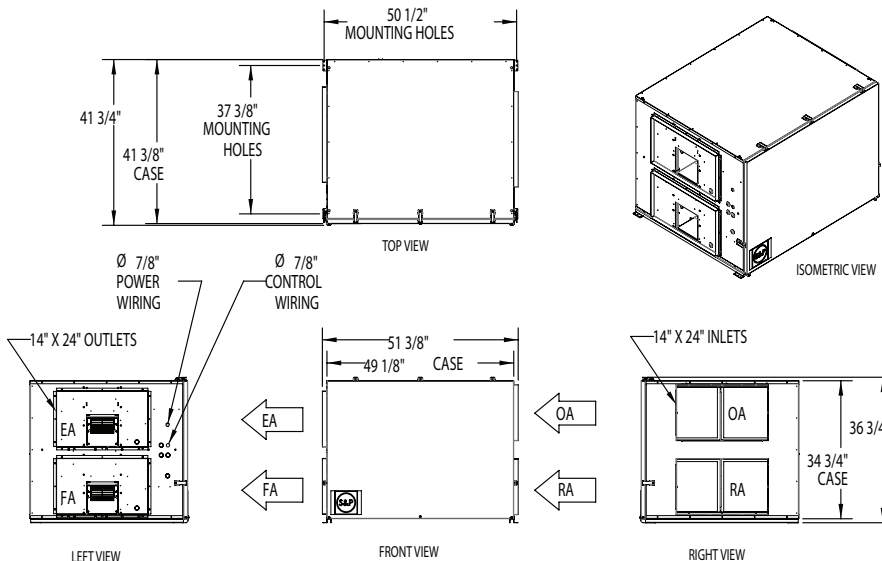


Ship Schedules:
● Next Day Shipment From Stock

Airflow Performance

Motor HP	Blower RPM	Turns Open	External Static Pressure (in w.g.)													
			0.0		0.25		0.5		0.75		0.9		1.25		1.5	
			SCFM	BHP	SCFM	BHP	SCFM	BHP	SCFM	BHP	SCFM	BHP	SCFM	BHP	SCFM	BHP
1.5	1148	4	1592	0.7	1480	0.7	1320	0.6	1120	0.5	800	0.4	-	-	-	-
	1304	2	1809	1.0	1720	1.0	1600	0.9	1410	0.8	1250	0.7	975	0.6	630	0.4
	1460	0	2025	1.5	1950	1.4	1845	1.3	1715	1.2	1540	1.1	1400	1.0	1165	0.8

DIMENSIONAL DATA



EA: Exhaust Air to outdoors
 OA: Outdoor Air intake
 RA: Room Air to be exhausted
 FA: Fresh Air to inside

Please refer to the General Catalog or contact the Factory for our Full Line of products available on standard shipping schedules.