

MODEL SWF

SIDEWALL CENTRIFUGAL FAN

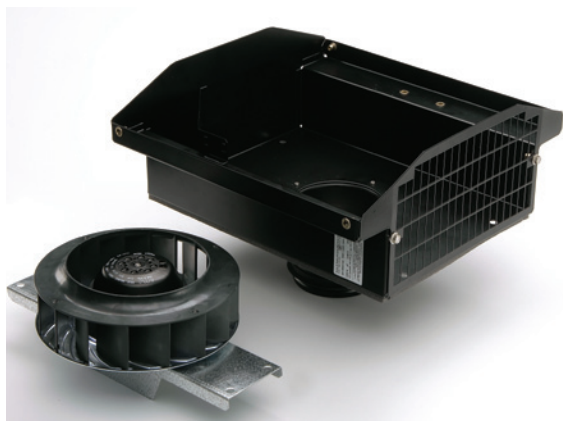


MODEL FEATURES

- Exhaust air up to 416 CFM with static pressure capabilities to 1.5" w.g.
- Galvanized steel casing with black backed enamel coating
- Pre-wired junction box
- Ideal for applications where space is limited
- Non-overloading backward inclined wheel for efficiency at higher static pressures
- cULus Listed

MODEL OVERVIEW

The SWF series utilizes the same powerful (high static) motor found in the popular PV Series fans, yet the SWF series is encased in an exterior mounted housing. The outdoor rated exterior housing provides easy access from the outside of a building or dwelling. This makes the SWF a great solution for installations where attic space or easy indoor access is difficult and not suitable for traditional PV style in-line mounting. The Sidewall Fan Series (SWF) of direct drive centrifugal ventilation fans consists of five model sizes ranging from 4-8". All models are designed for direct connection in-line with standard diameter round ducting. Airflow performance values range from 119 CFM up to 416 CFM.



All SWF series models incorporate a powerful external rotor motor that has been factory matched to a non-overloading backward curved centrifugal fan wheel.

This powerful combination enables the SWF to deliver exceptional airflow performances against high static pressure typically found in ducted ventilation systems. All motors within the SWF series are fully speed controllable using voltage or frequency control regulators.

The SWF series has been designed for easy through the wall installation. The totally enclosed motor design allows for the SWF to operate in high moisture, lint and dust laden

air. All models are manufactured with high quality materials and workmanship that is supported by a comprehensive **five (5) year warranty**.

The SWF series features a corrosion resistant galvanized steel casing with a baked enamel coating that can be painted to match the exterior wall. The unit also includes a built-in backdraft damper and an extended opening exhaust grille. The larger grille allows for the easy exhaust of "dirty" or lint laden air while the spring-loaded backdraft damper helps prevent insects, etc. from entering duct work.



Built-in Spring-loaded Backdraft Damper

Model SWF is available in our Quickship program. All sizes are available for next day shipping from stock.



5 year fan housing and motor warranty

CONSTRUCTION/SPECIFICATION CHECKLIST

Casing

- Manufactured from high grade pressed galvanized steel, with baked enamel coating.
- Removable top for easy access to motor for cleaning or inspection.
- Large grille opening for easy passing of lint and other potentially clogging materials.
- Supplied with a prewired junction box.

Wheel / Impeller

- Backward curved centrifugal type.
- Factory matched to an external rotor motor and dynamically balanced to eliminate vibration.

Motor

- Totally enclosed permanent split capacitor start and run external rotor motors.
- 115V 60Hz (single phase) electrical connection.
- Permanently sealed, self lubricating precision ball bearings.
- Safety Thermal Overload Protection Cut-Out (Automatic Reset Type).
- All Models are suitable for working airstreams up to 140° F

Code Approval

- All models have been independently safety tested by Underwriters Laboratories, Inc. and are UL and cUL Listed.
- The SWF product range is certified by the Home Ventilating Institute (HVI) for Air Performance.

ACCESSORIES



SC 15
Variable speed
control



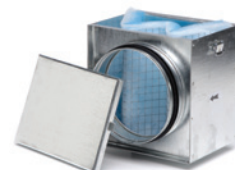
BOC/BOR
Interior Air Valve



SPT-100x
Pressure Switch



CS-325
Current Sensor

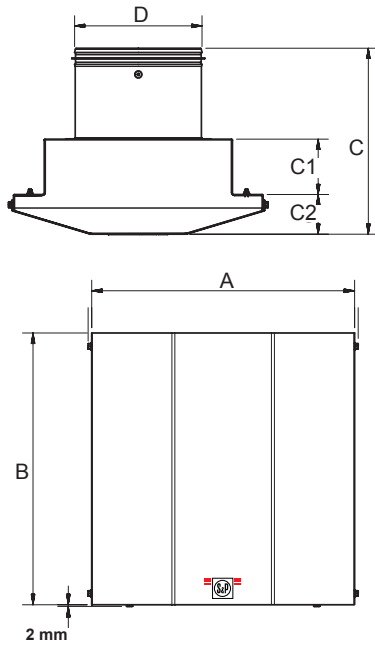


MFL
Filter Box



PERFORMANCE/DIMENSIONS

Dimensions in inches/mm



Model	A	B	C	C1	C2	D
SWF-100	13 1/4 337	13 1/4 337	9 228	3 76	2 7/16 62	4 100
SWF-100x	13 1/4 337	13 1/4 337	9 228	3 76	2 7/16 62	4 100
SWF-150	15 1/2 394	13 1/4 337	10 3/16 256	3 76	2 7/16 62	6 150
SWF-150x	15 1/2 394	16 1/16 408	10 254	3 3/16 81	2 7/16 62	6 150
SWF-200	15 1/2 394	16 1/16 408	11 7/16 290	3 3/8 87	2 7/16 62	8 200

Air Performance

Model	RPM	Volts	Frequency	Current	Watts	CFM vs. Static Pressure (SP) Ins. WG								
						0"	0.125"	0.25"	0.375"	0.5"	0.75"	1.0"	1.25"	1.5"
SWF-100	2200	120	60 Hz	0.52 A	57	119	106	92	78	64	44	26	-	-
SWF-100X	2600	120	60 Hz	0.8 A	90	171	162	152	142	118	90	66	46	28
SWF-150	2600	120	60 Hz	0.8 A	90	235	221	197	181	168	122	81	60	27
SWF-150X	2800	120	60 Hz	1.0 A	115	354	332	310	287	266	230	192	147	96
SWF-200	2800	120	60 Hz	1.0 A	115	416	395	368	341	324	287	233	184	132



Sound

Fan sound levels are measured in sones. At this time there are no sone level test standards available through HVI due to the fact that remote mounted fan noise levels are in proportion to the following: type of duct, length of duct, fan distance from the intake source and other random factors. It is generally accepted that remote mounted venting is quieter than standard (in room) venting.