

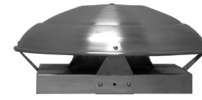
# MODEL RCXII/RCXII-SF

## GRAVITY RELIEF/INTAKE VENTILATOR

RCXII-SF = SELF FLASHING



**RCXII**  
(sizes 6-20)



**RCXII**  
(sizes 24-36)



**RCXII-SF**  
(sizes 6-20)

### APPLICATION

Relief and intake ventilators are used to exhaust (relief) or supply (intake) air from or to an enclosed area without the need for a power operated fan. They rely on a difference in static pressure inside and outside the area to create an air flow through the ventilator from the area of higher pressure to the area of lower pressure. If the enclosed area is under a negative pressure, air will flow into the enclosed area (intake). If the enclosed area has a positive pressure, air will flow from it to the outside (relief).

These units can also operate as gravity ventilators, allowing air to flow from an enclosed area using the "Stack Effect". The amount of air flow will depend on the temperature difference inside and outside the area and the height difference between the ventilator and the outside air intake to the area.

### CONSTRUCTION - RCXII

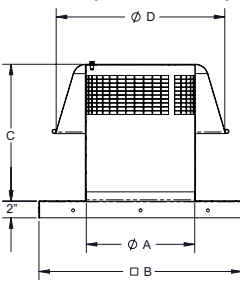
- Low contour spun aluminum hood for attractive appearance.
- All heavy-gauge aluminum construction.
- Weather resistant design for long life and maintenance free operation.
- Galvanized bird screen is standard.
- One piece curb with spun inlet for maximum efficiency.
- Shipped completely assembled for ease in installation.

### CONSTRUCTION - RCXII-SF

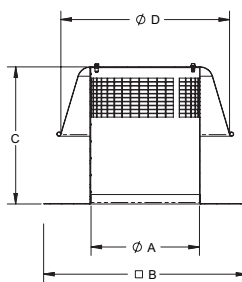
- Low contour spun aluminum hood for attractive appearance.
- All heavy-gauge aluminum construction.
- Weather resistant design for long life and maintenance free operation.
- Galvanized bird screen is standard.
- Shipped completely assembled for ease in installation.

### DIMENSIONAL DATA

**RCXII (sizes 6-20)**

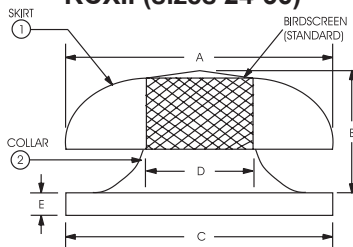


**RCXII-SF**



Size	A	B (RCXII)	C (RCXII)	D (RCXII)	B (SF)	C (SF)	D (SF)	Avg. Ship Wt. (lbs.)
06	7	16.5	8	18	18	10	14	7
08	9	16.5	10	18	18	12	14	12
10	11	24	10	25	24	14	20	12
12	13	24	10	25	24	16	20	12
14	15	24	12	32	28	18	27	15
16	17	24	14	32	28	20	27	20
18	19	29.5	14	32	28	22	27	30
20	21	29.5	16	36	32	22	30	30

**RCXII (sizes 24-36)**



Size	Neck Area sq. ft.	A	B	C	D	E	Avg. Ship Wt. (lbs.)
24	3.30	43-3/4	12-1/2	35-1/2	24-5/8	2	40
26	3.69	43-3/4	17-3/8	35-1/2	26	2	40
30	5.16	43-3/4	17-3/8	42-1/2	30-3/4	2	45
33	5.94	54-3/4	17-3/8	42-1/2	33	2	75
36	7.06	54-3/4	17-3/8	42-1/2	36	2	90

### ACCESSORIES

MODEL RCXII	12" HIGH ROOF CURB		115V MOTORIZED DAMPER		AUTOMATIC GRAVITY DAMPER	
	OD	STOCK NO.	OD	STOCK NO.	OD	STOCK NO.
6-8	14 3/4	611214 ●	8	2401.M0808 ●	8	2401.0808 ●
10-16	22 1/4	611222 ●	15	2401.M1515 ●	15	2401.1515 ●
18-20	27 1/4	611227 ●	21	2401.M2121 ●	21	2401.2121 ●
24-26	33 3/4	611233 ▲	27	2401.M2727 ▲	27	2401.2727 ▲
30-33-36	40 3/4	611240 ▲	34	2401.M3434 ▲	34	2401.3434 ▲

Dampers and motor kits ship separate - for field assembly.

**CAUTION:** Motors are not suitable for explosive or flammable environments

Ship Schedules:
● Next Day Shipment From Stock
▲ 3 Day Shipment From Stock
◆ 10 Day Shipment

ALL DIMENSIONS IN INCHES, WEIGHTS IN POUNDS. OD IS OUTSIDE DIMENSION OF SQUARE CURB AND DAMPER. DUE TO CONTINUING RESEARCH, JencoFan RESERVES THE RIGHT TO CHANGE SPECIFICATIONS WITHOUT NOTICE.

Please refer to the General Catalog or contact the Factory for our Full Line of products available on standard shipping schedules.

**Models RCXII (sizes 6-20) and Models RCXII-SF**

<b>MODEL RCXII Gravity Relief Ventilator</b>												
MODEL	THROAT AREA FT. <sup>2</sup>	CFM Static Pressure									STOCK NO. RCXII	STOCK NO. RCXII-SF
		.025	.050	.100	.125	.150	.200	.250	.300	.350		
6	0.3	93	131	185	207	227	262	293	320	346	RCXII06S ●	RCXII06SFS ●
8	0.4	221	313	442	494	541	625	699	766	827	RCXII08S ●	RCXII08SFS ●
10	0.7	297	420	594	664	727	840	939	1029	1111	RCXII10S ●	RCXII10SFS ●
12	0.9	493	697	986	1102	1208	1394	1559	1708	1845	RCXII12S ●	RCXII12SFS ●
14	1.2	604	853	1207	1349	1478	1707	1908	2091	2258	RCXII14S ●	RCXII14SFS ●
16	1.6	746	1055	1492	1668	1827	2110	2359	2584	2791	RCXII16S ●	RCXII16SFS ●
18	2.0	919	1300	1838	2055	2251	2599	2906	3184	3439	RCXII18S ●	RCXII18SFS ●
20	2.4	1127	1593	2253	2519	2759	3186	3562	3902	4215	RCXII20S ●	RCXII20SFS ●

<b>MODEL RCXII Gravity Intake Ventilator</b>												
MODEL	THROAT AREA FT. <sup>2</sup>	CFM Static Pressure									STOCK NO. RCXII	STOCK NO. RCXII-SF
		.025	.050	.100	.125	.150	.200	.250	.300	.350		
6	0.3	64	91	128	143	157	181	202	222	239	RCXII06S ●	RCXII06SFS ●
8	0.4	148	209	296	331	363	419	468	513	554	RCXII08S ●	RCXII08SFS ●
10	0.7	202	286	404	452	495	571	639	700	756	RCXII10S ●	RCXII10SFS ●
12	0.9	330.5	467	661	739	810	935	1045	1145	1237	RCXII12S ●	RCXII12SFS ●
14	1.2	440.5	623	881	985	1079	1246	1393	1526	1648	RCXII14S ●	RCXII14SFS ●
16	1.6	552	781	1104	1234	1352	1561	1746	1912	2065	RCXII16S ●	RCXII16SFS ●
18	2.0	707.5	1001	1415	1582	1733	2001	2237	2451	2647	RCXII18S ●	RCXII18SFS ●
20	2.4	856	1211	1712	1914	2097	2421	2707	2965	3203	RCXII20S ●	RCXII20SFS ●

*Insect Screens - Add .10 to area shown in table.  
Damper - Add .10 to area shown in table.*

**Model RCXII (sizes 24-36)**

<b>MODEL RCXII Gravity Relief Ventilator</b>										
MODEL	THROAT AREA FT. <sup>2</sup>	CFM Static Pressure								STOCK NO. RCXII
		.03	.06	.09	.125	.150	.20	.25	.30	
24	3.30	1535	2168	2656	3128	3429	3960	4425	4851	RCXII24S ▲
26	3.69	1716	2424	2970	3498	3834	4428	4948	5424	RCXII26S ▲
30	5.16	2399	3390	4154	4892	5361	6192	6920	7585	RCXII30S ▲
33	5.94	2762	3903	4782	5631	6172	7128	7966	8732	RCXII33S ▲
36	7.06	3283	4638	5683	6693	7335	8472	9467	10378	RCXII36S ▲

<b>MODEL RCXII Gravity Intake Ventilator</b>										
MODEL	THROAT AREA FT. <sup>2</sup>	CFM Static Pressure								STOCK NO. RCXII
		.03	.06	.09	.125	.150	.20	.25	.30	
24	3.30	1376	1944	2383	2808	3076	3551	3969	4346	RCXII24S ▲
26	3.69	1539	2173	2664	3140	3439	3970	4439	4860	RCXII26S ▲
30	5.16	2152	3039	3726	4391	4809	5552	6207	6796	RCXII30S ▲
33	5.94	2476	3499	4289	5055	5536	6391	7146	7823	RCXII33S ▲
36	7.06	2944	4158	5097	6008	6580	7597	8493	9298	RCXII36S ▲

*Shaded selections are over recommended 650 FPM. Pick next larger size or use optional weather screen.  
Insect Screens - Add .10 to area shown in table.  
Damper - Add .10 to area shown in table.*

*Please refer to the General Catalog or contact the Factory for our Full Line of products available on standard shipping schedules.*

**GRAVITY VENTILATORS**